

**CORRECTIVE SERVICES**

AUSTRALIA

EMBARGO: 11.30AM (CANBERRA TIME) THURS 27 NOV 2008

C O N T E N T S

	<i>page</i>
Notes	2
Summary of findings	3

TABLES

1 Persons in corrective services, quarterly comparisons	8
2 Persons in full-time custody	10
3 Imprisonment rates	11
4 Persons in full-time custody, by sex	12
5 Imprisonment rates, by sex	13
6 Indigenous persons in full-time custody, by sex	14
7 Indigenous imprisonment rates, by sex	15
8 Persons in full-time custody, by type of custody	16
9 Imprisonment rates, by type of custody	17
10 Persons in full-time custody, by legal status	18
11 Imprisonment rates, by legal status	19
12 Indigenous persons in full-time custody, by legal status	20
13 Indigenous imprisonment rates, by legal status	21
14 Sentenced prisoner receptions into full-time custody	22
15 Persons in periodic detention, by sex	23
16 Federal sentenced persons in full-time custody, by sex	24
17 Persons in community-based corrections, by sex	25
18 Community-based corrections rates, by sex	26
19 Persons in community-based corrections, by type of order	27

ADDITIONAL INFORMATION

Explanatory Notes	29
Appendix Experimental Community-Based Corrections Data	36
Glossary	40

I N Q U I R I E S

For further information about these and related statistics, contact the National Information and Referral Service on 1300 135 070 or Chay Ang on Melbourne (03) 9615 7681.

NOTES

FORTHCOMING ISSUES

<i>ISSUE (Quarter)</i>	<i>RELEASE DATE</i>
December 2008	19 March 2009
March 2009	18 June 2009



ABOUT THIS PUBLICATION

This publication presents information on persons in custody and community-based corrections. The statistics are derived from information provided to the Australian Bureau of Statistics (ABS) from administrative records held by corrective services agencies in each state and territory, and from the Australian Government Attorney-General's Department for details on federal prisoners. Details are provided for each state and territory on: prisoner numbers and imprisonment rates by type of custody (i.e. open or secure custody or periodic detention); prisoner numbers by legal status (sentenced or unsentenced) for all prisoners and for Indigenous prisoners; the number of sentenced receptions into custody; the number of federal prisoners; and the numbers and rates of persons serving community-based corrections orders. Experimental data on the Indigenous status of persons in community-based corrections are also included in the Appendix.

The ABS acknowledges the valuable contribution of the Board of Management and the Advisory Group of the National Corrective Services Statistics Unit as well as the staff of the various agencies that provide the statistics that are presented in this publication.

FURTHER INFORMATION

More information about ABS activities in the field of crime and justice statistics is available from the Crime and Justice theme page on the ABS website <www.abs.gov.au>. Details of other ABS publications relating to Crime and Justice statistics can be found in paragraphs 49–50 of the Explanatory Notes.



ABBREVIATIONS

ABS	Australian Bureau of Statistics
ACT	Australian Capital Territory
Aust.	Australia
ERP	estimated resident population
NCCJS	National Centre for Crime and Justice Statistics, Australian Bureau of Statistics
NSW	New South Wales
NT	Northern Territory
Qld	Queensland
SA	South Australia
Tas.	Tasmania
Vic.	Victoria
WA	Western Australia

Brian Pink
Australian Statistician

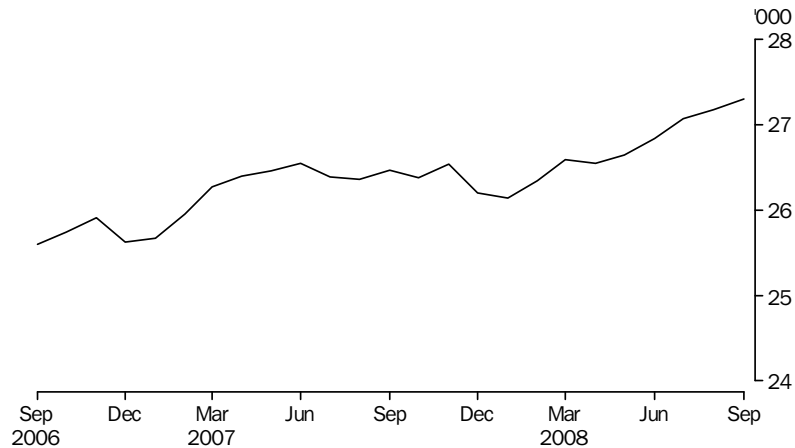
SUMMARY OF FINDINGS

PERSONS IN CORRECTIVE SERVICES

Based on first day of the month averages, for the September quarter 2008, there were 82,287 persons under the authority of corrective services (excluding those in periodic detention). The total comprised 27,135 persons in full-time custody and 55,152 persons in community-based corrections. This represents an increase of 4% (2,987 persons) from the September quarter 2007. Over the same period, persons in full-time custody increased by 3% (751 persons) and persons in community-based corrections increased by 4% (2,236 persons).

PERSONS IN CUSTODY Number of prisoners

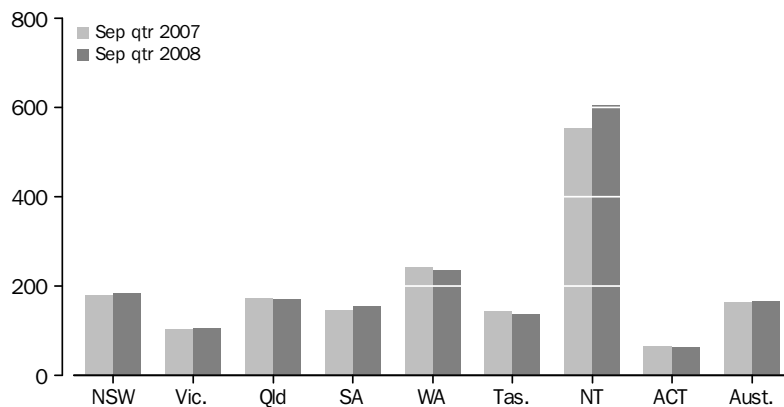
PERSONS IN PRISON CUSTODY, Average daily number per month



During the September quarter 2008, the average daily number of full-time prisoners in Australia was 27,180. This was an increase of 2% on the June quarter 2008, and of 3% on the September quarter 2007.

Rates per 100,000 adults

AVERAGE DAILY IMPRISONMENT RATE (a), By states and territories



(a) Rate per 100,000 adult population.

Nationally, the September quarter 2008 average daily imprisonment rate was 166 prisoners per 100,000 adult population, an increase of 1% from the September quarter 2007 (164 prisoners). The Northern Territory had the highest imprisonment rate (606 prisoners per 100,000 adult population), followed by Western Australia (236) and New South Wales (184).

SUMMARY OF FINDINGS *continued*

*Rates per 100,000 adults
continued*

The Australian Capital Territory (including Australian Capital Territory prisoners held in New South Wales prisons) and Victoria had the lowest imprisonment rates (64 and 106 prisoners per 100,000 adult population respectively).

The Northern Territory recorded the largest proportional increase in imprisonment rates from the September quarter 2007 (10%). The largest proportional decrease over the same period was recorded in Tasmania (5%).

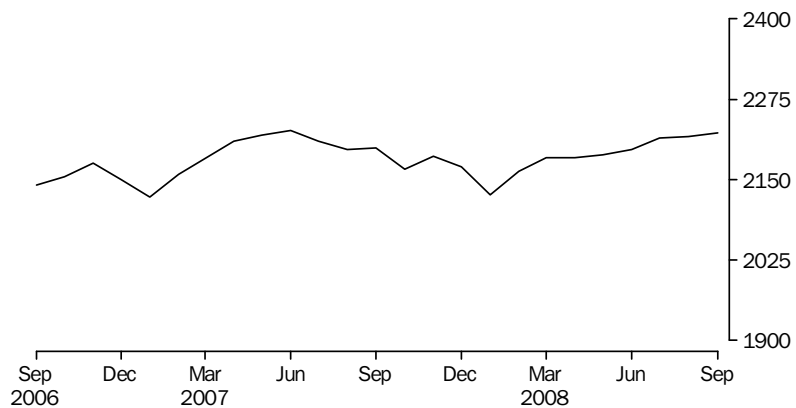
Sex

Of the average daily number of full-time prisoners in Australia in the September quarter 2008, 25,267 (93%) were male and 1,913 (7%) were female. The average daily imprisonment rate for males was 314 prisoners per 100,000 adult male population, while for females it was 23 prisoners per 100,000 adult female population. Males were almost 14 times more likely to be in prison than females.

Indigenous Prisoners

The average daily number of full-time Indigenous adult prisoners in Australia in the September quarter 2008 was 6,690, comprising 6,133 (92%) males and 557 (8%) females. Over 75% of the total Indigenous prisoner population was located in New South Wales (2,082), Western Australia (1,604) and Queensland (1,482).

AVERAGE DAILY INDIGENOUS IMPRISONMENT RATE(a), Per month



(a) Rate per 100,000 adult Indigenous population.

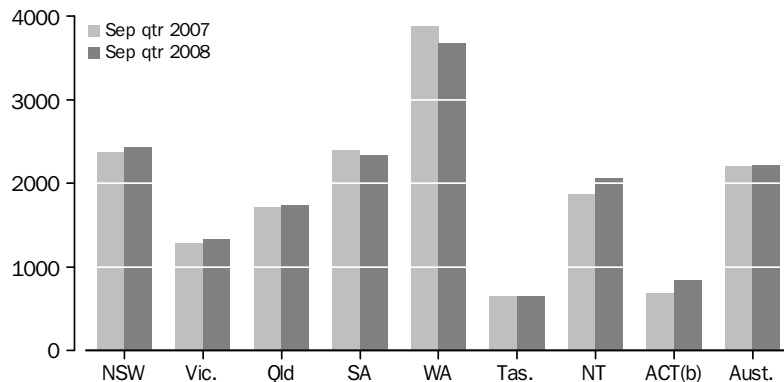
The national average daily Indigenous imprisonment rate in the September quarter 2008 was 2,218 per 100,000 adult Indigenous population, an increase of 1% from the previous quarter, as well as from the September quarter 2007.

The highest Indigenous imprisonment rate was recorded in Western Australia (3,674 Indigenous prisoners per 100,000 adult Indigenous population), followed by New South Wales (2,428) and South Australia (2,343). The lowest Indigenous imprisonment rate was recorded in Tasmania (644), followed by the Australian Capital Territory (841).

SUMMARY OF FINDINGS *continued*

Indigenous Prisoners continued

AVERAGE DAILY INDIGENOUS IMPRISONMENT RATE(a), By states and territories



(a) Rate per 100,000 adult Indigenous population.

(b) Apparent variations in ACT rates may be as a result of small counts, see tables 6 and 7.

The largest proportional increase in the Indigenous imprisonment rate from the September quarter 2007 was recorded in the Australian Capital Territory (including Australian Capital Territory prisoners held in New South Wales prisons), (23%), followed by the Northern Territory (10%). Western Australia recorded the largest proportional decrease (5%) over the same period.

Different age profiles of the Indigenous and non-Indigenous population can affect the imprisonment rate numbers. The quarterly collection is unable to take age into account; however, data from the Prisoner Census collection can provide this level of detail.

The national age standardised Indigenous imprisonment rate from the annual Prisoner Census conducted at June 2007 was over 13 times higher (1,787 per 100,000 adult Indigenous population) than the rate for non-Indigenous persons (134 per 100,000 adult non-Indigenous population). Further information on the comparison of imprisonment rates between Indigenous and non-Indigenous populations can be found in *Prisoners in Australia 2007* (cat.no.4517.0).

Type of full-time custody

The average daily number of prisoners in secure prison custody in the September quarter 2008 was 20,949 (77% of prisoners in full-time custody). Open prison custody comprised 6,232 (23%) prisoners.

In the September quarter 2008, all prisoners held in full-time custody in the Australian Capital Territory were in secure custody. Of the other states and territories, South Australia had the highest proportion of prisoners in secure custody (90%), followed by Victoria, Queensland and Tasmania (all 89%). New South Wales (including Australian Capital Territory prisoners held in New South Wales prisons) had the lowest proportion of prisoners in secure full-time custody (64%).

Legal status

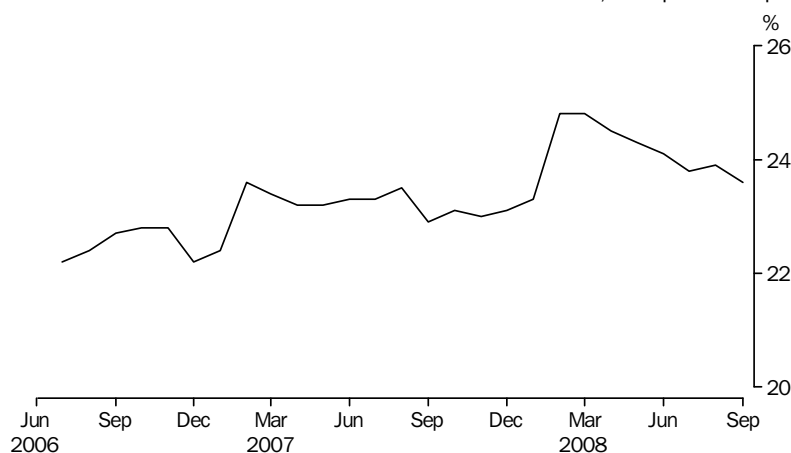
The average number of prisoners in full-time custody on the first day of each month in the September quarter 2008 was 27,135, comprising an average of 20,679 (76%) sentenced and 6,456 (24%) unsentenced prisoners. Sentenced prisoners increased by 3% from the previous quarter and by 2% from the September quarter 2007.

SUMMARY OF FINDINGS *continued*

Legal status continued

Unsentenced prisoners decreased by less than 1% from the previous quarter and increased by 5% from the September quarter 2007. The Australian Capital Territory (including Australian Capital Territory prisoners held in New South Wales prisons) and South Australia had the highest proportions of unsentenced prisoners (57% and 34% respectively). The lowest proportions of unsentenced prisoners were recorded in Victoria (19%) and Western Australia (21%).

UNSENTENCED PERSONS IN PRISON CUSTODY, Proportion per month



Sentenced Prisoner Receptions

There were 7,383 sentenced prisoner receptions into full-time custody in Australia in the September quarter 2008. This number decreased by 56 (1%) from the June quarter 2008, however, it increased by 507 (7%) from the September quarter 2007.

Periodic detention

Periodic detention is a form of custody or order where a sentenced prisoner is required to be held in custody on a part-time basis. This type of custody order is only used in New South Wales and the Australian Capital Territory. During the September quarter 2008 there was an average daily number of 731 persons in New South Wales and 59 persons in the Australian Capital Territory held in periodic detention. The rate of imprisonment for periodic detainees increased by 5% in New South Wales, and decreased by 4% in the Australian Capital Territory from the June quarter 2008.

Federal prisoners

In the September quarter 2008, there were 685 federal prisoners in Australia, an increase of 2% (16 persons) from the September quarter 2007. More than half (398) of the federal prisoners were sentenced in New South Wales.

PERSONS IN COMMUNITY-BASED CORRECTIONS

Community-based corrections orders are non-custodial orders served under the authority of adult corrective services agencies and include restricted movement, fine option, community service, parole, bail, and sentenced probation. Quarterly averages are based on first day of the month figures. In the September quarter 2008, there were 55,152 persons in community-based corrections in Australia, an increase of 1% (290 persons) from the June quarter 2008 and 4% (2,236 persons) from the September quarter 2007.

Sex

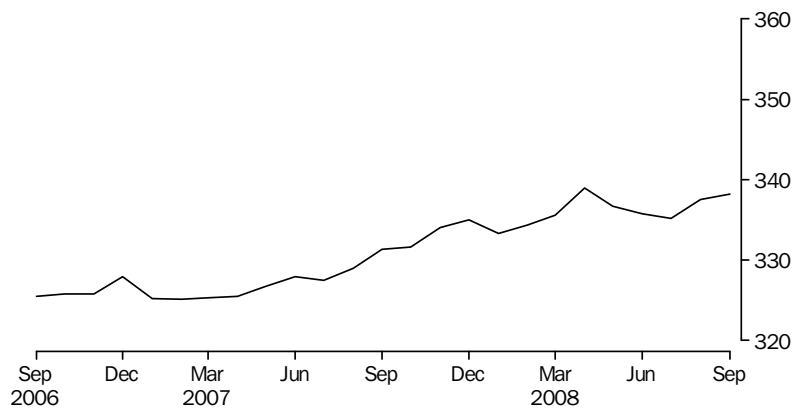
Of the average number of persons in community-based corrections in Australia in the September quarter 2008, 44,936 (81%) were male and 10,126 (18%) were female.

SUMMARY OF FINDINGS *continued*

Rates per 100,000 adults

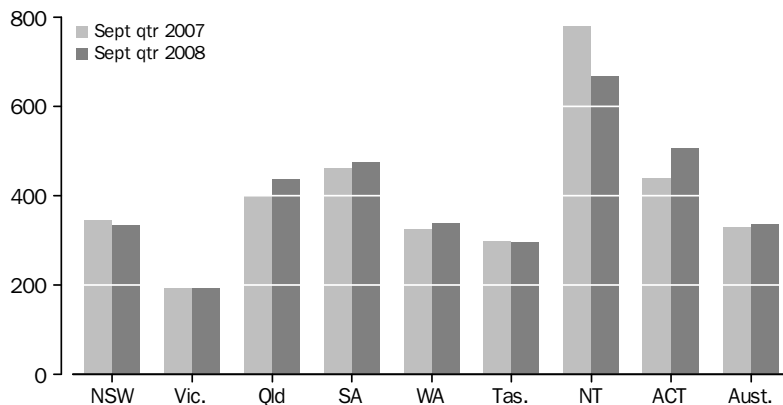
Nationally, the rate of persons in community-based corrections was 337 persons per 100,000 adult population for the September quarter 2008. This was an increase of 2% from the September quarter 2007 (329 persons per 100,000 adults). The largest increase from the September quarter 2007 was recorded in the Australian Capital Territory (16%). The largest decrease was recorded in the Northern Territory (14%).

COMMUNITY-BASED CORRECTIONS RATE(a), Per month



(a) Rate per 100,000 adult population.

COMMUNITY-BASED CORRECTIONS RATE(a), By states and territories



(a) Rate per 100,000 adult population.

In the September quarter 2008, the rate of community-based corrections for males was 558 per 100,000 adult male population compared to 122 females per 100,000 adult female population. Males were almost five times more likely to be in community-based corrections than females.

Type of orders

In the September quarter 2008, there were 12,241 persons serving parole orders following a period of imprisonment, an increase of 3% from the June quarter 2008. Three states accounted for more than three quarters (79%) of persons serving parole orders: New South Wales (4,255 persons), Queensland (3,969) and Victoria (1,505). The largest proportional increase in parole orders from the June quarter 2008 was recorded in Tasmania (11%), followed by Queensland (9%).

For this same period, there were 33,756 persons under sentenced probation and 9,881 persons serving community service orders.

PERSONS IN CORRECTIVE SERVICES, Quarterly comparisons(a)

	NSW(b)	Vic.	Qld(c)	SA	WA	Tas.	NT	ACT in ACT(d)	ACT in NSW(b)	ACT Total(e)	Aust. (b) (c)
AVERAGE DAILY NUMBER											
Males in full-time custody											
Sep Qtr 07	8 885	3 929	5 100	1 678	3 542	507	804	71	93	163	24 513
Jun Qtr 08	9 025	3 946	5 138	1 778	3 471	488	877	80	85	165	24 803
Sep Qtr 08	9 201	4 057	5 155	1 809	3 575	482	899	88	68	157	25 267
Females in full-time custody											
Sep Qtr 07	717	250	404	122	322	35	38	6	5	11	1 894
Jun Qtr 08	752	239	409	124	262	40	41	8	8	16	1 875
Sep Qtr 08	709	251	444	126	287	40	48	8	5	13	1 913
Persons in full-time custody											
Sep Qtr 07	9 602	4 179	5 504	1 800	3 863	541	842	76	97	174	26 407
Jun Qtr 08	9 777	4 185	5 547	1 902	3 733	527	919	88	94	181	26 677
Sep Qtr 08	9 910	4 308	5 599	1 936	3 862	522	947	97	73	170	27 180
Indigenous persons in full-time custody											
Sep Qtr 07	1 993	238	1 417	399	1 650	69	699	8	9	18	6 473
Jun Qtr 08	2 070	242	1 511	418	1 530	65	756	13	8	22	6 605
Sep Qtr 08	2 082	255	1 482	401	1 604	70	782	15	8	22	6 690
AVERAGE NUMBER ON FIRST DAY OF MONTH											
Unsentenced persons in full-time custody											
Sep Qtr 07	2 378	813	1 272	631	700	116	158	67	—	67	6 135
Jun Qtr 08	2 571	855	1 255	645	756	117	198	86	—	86	6 482
Sep Qtr 08	2 523	827	1 227	668	791	113	214	92	—	92	6 456
Sentenced persons in full-time custody											
Sep Qtr 07	7 217	3 359	4 239	1 176	3 140	418	699	1	97	98	20 249
Jun Qtr 08	7 188	3 321	4 290	1 265	2 965	418	710	—	92	92	20 158
Sep Qtr 08	7 417	3 458	4 336	1 294	3 037	407	730	—	69	70	20 679
Persons in full-time custody											
Sep Qtr 07	9 594	4 172	5 511	1 807	3 840	534	857	68	97	165	26 384
Jun Qtr 08	9 759	4 176	5 545	1 910	3 721	535	907	86	92	178	26 640
Sep Qtr 08	9 940	4 286	5 563	1 962	3 828	519	944	92	69	162	27 135
Males in community-based corrections(f)											
Sep Qtr 07	15 265	6 285	10 084	4 598	4 013	880	1 048	979	..	979	43 152
Jun Qtr 08	15 174	6 297	11 164	4 696	4 309	915	1 012	1 081	..	1 081	44 648
Sep Qtr 08	14 986	6 370	11 537	4 777	4 323	889	913	1 141	..	1 141	44 936
Females in community-based corrections(f)											
Sep Qtr 07	2 772	1 458	2 668	1 084	1 137	240	139	169	..	169	9 669
Jun Qtr 08	2 852	1 468	2 845	1 144	1 249	235	140	196	..	196	10 128
Sep Qtr 08	2 839	1 487	2 848	1 148	1 234	232	131	206	..	206	10 126
Persons in community-based corrections(f)(g)											
Sep Qtr 07	18 107	7 769	12 752	5 683	5 150	1 120	1 187	1 148	..	1 148	52 916
Jun Qtr 08	18 089	7 787	14 009	5 840	5 558	1 150	1 152	1 277	..	1 277	54 862
Sep Qtr 08	17 898	7 874	14 385	5 926	5 557	1 121	1 044	1 347	..	1 347	55 152

.. not applicable

— nil or rounded to zero (including null cells)

(a) For the calculation of quarterly figures – see Explanatory Notes, paragraph 5.

(b) Custodial data includes ACT prisoners held in NSW prisons. The ACT in NSW figures are a subset of the NSW figures and are not separately counted in the Australian totals – see Explanatory Notes, paragraph 17.

(c) Data prior to the September quarter 2007 may be slightly overstated – see Explanatory Notes, paragraph 39.

(d) Refers to unsentenced persons in ACT prison custody and may include some sentenced fine default only prisoners – see Explanatory Notes, paragraph 17.

(e) ACT in ACT figures and ACT in NSW figures may not add to ACT total due to rounding.

(f) Figures include persons with breached or suspended orders, with the exception of Vic. and Tas.

(g) Includes persons whose sex is unknown.

PERSONS IN CORRECTIVE SERVICES, Quarterly comparisons(a) *continued*

	NSW(b)	Vic.	Qld(c)	SA	WA	Tas.	NT	ACT in ACT(d)	ACT in NSW(b)	ACT Total(e)	Aust.(b)(c)
PERCENTAGE CHANGE (AVERAGE DAILY NUMBER)											
Males in full-time custody											
Sep Qtr 07 to Sep Qtr 08	3.6	3.3	1.1	7.8	0.9	-4.9	11.8	23.9	-26.9	-3.7	3.1
Jun Qtr 08 to Sep Qtr 08	2.0	2.8	0.3	1.7	3.0	-1.2	2.5	10.0	-20.0	-4.8	1.9
Females in full-time custody											
Sep Qtr 07 to Sep Qtr 08	-1.1	0.4	9.9	3.3	-10.9	14.3	26.3	33.3	—	18.2	1.0
Jun Qtr 08 to Sep Qtr 08	-5.7	5.0	8.6	1.6	9.5	—	17.1	—	-37.5	-18.8	2.0
Persons in full-time custody											
Sep Qtr 07 to Sep Qtr 08	3.2	3.1	1.7	7.6	—	-3.5	12.5	27.6	-24.7	-2.3	2.9
Jun Qtr 08 to Sep Qtr 08	1.4	2.9	0.9	1.8	3.5	-0.9	3.0	10.2	-22.3	-6.1	1.9
Indigenous persons in full-time custody											
Sep Qtr 07 to Sep Qtr 08	4.5	7.1	4.6	0.5	-2.8	1.4	11.9	87.5	-11.1	22.2	3.4
Jun Qtr 08 to Sep Qtr 08	0.6	5.4	-1.9	-4.1	4.8	7.7	3.4	15.4	—	—	1.3
PERCENTAGE CHANGE (AVERAGE NUMBER ON FIRST DAY OF MONTH)											
Unsentenced persons in full-time custody											
Sep Qtr 07 to Sep Qtr 08	6.1	1.7	-3.5	5.9	13.0	-2.6	35.4	37.3	—	37.3	5.2
Jun Qtr 08 to Sep Qtr 08	-1.9	-3.3	-2.2	3.6	4.6	-3.4	8.1	7.0	—	7.0	-0.4
Sentenced persons in full-time custody											
Sep Qtr 07 to Sep Qtr 08	2.8	2.9	2.3	10.0	-3.3	-2.6	4.4	-100.0	-28.9	-28.6	2.1
Jun Qtr 08 to Sep Qtr 08	3.2	4.1	1.1	2.3	2.4	-2.6	2.8	—	-25.0	-23.9	2.6
Persons in full-time custody											
Sep Qtr 07 to Sep Qtr 08	3.6	2.7	0.9	8.6	-0.3	-2.8	10.2	35.3	-28.9	-1.8	2.8
Jun Qtr 08 to Sep Qtr 08	1.9	2.6	0.3	2.7	2.9	-3.0	4.1	7.0	-25.0	-9.0	1.9
Males in community-based corrections(f)											
Sep Qtr 07 to Sep Qtr 08	-1.8	1.4	14.4	3.9	7.7	1.0	-12.9	16.5	..	16.5	4.1
Jun Qtr 08 to Sep Qtr 08	-1.2	1.2	3.3	1.7	0.3	-2.8	-9.8	5.6	..	5.6	0.6
Females in community-based corrections(f)											
Sep Qtr 07 to Sep Qtr 08	2.4	2.0	6.7	5.9	8.5	-3.3	-5.8	21.9	..	21.9	4.7
Jun Qtr 08 to Sep Qtr 08	-0.5	1.3	0.1	0.3	-1.2	-1.3	-6.4	5.1	..	5.1	—
Persons in community-based corrections(f)(g)											
Sep Qtr 07 to Sep Qtr 08	-1.2	1.4	12.8	4.3	7.9	0.1	-12.0	17.3	..	17.3	4.2
Jun Qtr 08 to Sep Qtr 08	-1.1	1.1	2.7	1.5	—	-2.5	-9.4	5.5	..	5.5	0.5

.. not applicable

— nil or rounded to zero (including null cells)

(a) For the calculation of quarterly figures – see Explanatory Notes, paragraph 5.

(b) Custodial data includes ACT prisoners held in NSW prisons. The ACT in NSW figures are a subset of the NSW figures and are not separately counted in the Australian totals – see Explanatory Notes, paragraph 17.

(c) Data prior to the September quarter 2007 may be slightly overstated – see Explanatory Notes, paragraph 39.

(d) Refers to unsentenced persons in ACT prison custody and may include some sentenced fine default only prisoners – see Explanatory Notes, paragraph 17.

(e) ACT in ACT figures and ACT in NSW figures may not add to ACT total due to rounding.

(f) Figures include persons with breached or suspended orders, with the exception of Vic. and Tas.

(g) Includes persons whose sex is unknown.

PERSONS IN FULL-TIME CUSTODY

	NSW(a)	Vic. (b)	Qld(c)	SA	WA	Tas.	NT	ACT in ACT(d)	ACT in NSW(a)	ACT Total(e)	Aust. (a) (b) (c)
AVERAGE DAILY NUMBER											
2005	9 043	3 610	5 351	1 521	3 445	526	791	66	119	185	24 353
2006	9 281	3 825	5 569	1 590	3 517	518	803	66	115	181	25 169
2007	9 576	4 144	5 571	1 776	3 774	537	856	71	101	172	26 305
2007											
Sep Qtr	9 602	4 179	5 504	1 800	3 863	541	842	76	97	174	26 407
Dec Qtr	9 550	4 216	5 446	1 822	3 859	561	843	75	101	176	26 372
2008											
Mar Qtr	9 616	4 126	5 466	1 882	3 753	530	896	90	101	191	26 359
Jun Qtr	9 777	4 185	5 547	1 902	3 733	527	919	88	94	181	26 677
Sep Qtr	9 910	4 308	5 599	1 936	3 862	522	947	97	73	170	27 180
2007											
Jul	9 597	4 157	5 555	1 785	3 822	539	866	72	98	170	26 394
Aug	9 623	4 164	5 503	1 799	3 836	537	829	74	96	170	26 364
Sep	9 585	4 218	5 452	1 815	3 934	548	830	84	99	182	26 465
Oct	9 513	4 248	5 457	1 809	3 906	565	808	74	98	172	26 380
Nov	9 580	4 254	5 489	1 843	3 878	569	849	81	102	183	26 543
Dec	9 557	4 147	5 393	1 815	3 794	550	872	72	102	174	26 199
2008											
Jan	9 561	4 126	5 373	1 834	3 745	528	894	77	98	175	26 138
Feb	9 601	4 108	5 473	1 904	3 730	531	906	94	106	199	26 346
Mar	9 683	4 142	5 553	1 911	3 782	533	889	100	99	198	26 592
Apr	9 692	4 175	5 547	1 891	3 723	532	905	85	99	185	26 550
May	9 770	4 188	5 532	1 895	3 726	528	920	86	93	179	26 645
Jun	9 869	4 192	5 564	1 919	3 749	523	931	92	89	181	26 838
Jul	9 916	4 272	5 569	1 944	3 816	517	934	98	82	180	27 067
Aug	9 919	4 319	5 588	1 942	3 852	516	948	95	72	167	27 179
Sep	9 895	4 333	5 643	1 920	3 918	534	960	97	66	163	27 299

- (a) Includes ACT prisoners held in NSW prisons. The ACT in NSW figures are a subset of the NSW figures and are not separately counted in the Australian totals – see Explanatory Notes, paragraph 17.
- (b) As of 1 July 2005, the definition of an adult changed in Vic. to a person aged 18 years and over – see Explanatory Notes, paragraph 38.
- (c) Data prior to the September quarter 2007 may be slightly overstated – see Explanatory Notes, paragraph 39.
- (d) Refers to unsentenced persons in ACT prison custody and may include some sentenced fine default only prisoners – see Explanatory Notes, paragraph 17.
- (e) ACT in ACT figures and ACT in NSW figures may not add to ACT total due to rounding.

IMPRISONMENT RATES (a)

	NSW(b)	Vic.(c)	Qld(d)	SA	WA	Tas.	NT	ACT(e)	Aust.(c)(d)
RATE PER 100,000 ADULT POPULATION									
2005	172.7	93.0	177.3	127.4	227.5	143.3	556.8	74.4	156.8
2006	175.6	98.0	180.1	132.0	227.5	139.7	552.3	72.0	160.0
2007	180.1	104.0	175.0	144.9	238.2	143.4	566.5	66.3	164.2
2007									
Sep Qtr	180.6	104.5	172.1	146.2	243.0	144.1	553.0	66.4	164.3
Dec Qtr	179.1	105.0	169.2	147.7	241.3	149.2	550.0	66.9	163.4
2008									
Mar Qtr	179.8	102.3	169.0	152.2	233.1	140.7	579.6	72.4	162.7
Jun Qtr	182.3	103.4	170.5	153.3	230.3	139.4	590.4	68.7	163.9
Sep Qtr	184.4	105.8	170.9	155.4	236.2	137.6	606.0	64.0	166.1
2007									
Jul	180.5	103.9	173.7	145.0	240.4	143.5	569.1	64.9	164.2
Aug	181.0	104.1	172.0	146.2	241.2	143.0	544.5	64.9	164.0
Sep	180.3	105.4	170.4	147.5	247.4	146.0	545.1	69.6	164.7
Oct	178.4	105.8	169.6	146.6	244.2	150.3	527.3	65.2	163.5
Nov	179.6	105.9	170.6	149.4	242.5	151.2	554.2	69.6	164.5
Dec	179.2	103.2	167.6	147.1	237.2	146.3	568.7	66.1	162.4
2008									
Jan	178.8	102.3	166.1	148.3	232.6	140.0	578.4	66.5	161.3
Feb	179.4	101.8	169.2	154.0	231.7	140.8	586.1	75.7	162.6
Mar	181.1	102.7	171.7	154.5	234.9	141.3	575.0	75.3	164.1
Apr	180.6	103.1	170.5	152.5	229.7	140.6	581.6	70.0	163.2
May	182.2	103.5	170.0	152.8	229.9	139.5	591.2	67.7	163.7
Jun	184.1	103.6	171.0	154.7	231.3	138.2	598.4	68.5	164.9
Jul	184.3	104.9	170.0	156.1	233.4	136.2	597.5	67.7	165.4
Aug	184.6	106.1	170.5	155.9	235.6	135.9	606.7	63.0	166.1
Sep	184.2	106.4	172.2	154.1	239.6	140.7	614.1	61.4	166.8

(a) Imprisonment rates from the June quarter 2007 have been calculated using preliminary ERP rebased on the 2006 Census of Population and Housing – see Explanatory Notes, paragraphs 23–24.

(b) Excludes ACT prisoners held in NSW prisons.

(c) As of 1 July 2005, the definition of an adult changed in Vic. to a person aged 18 years and over – see Explanatory Notes, paragraph 38.

(d) Data prior to the September quarter 2007 may be slightly overstated – see Explanatory Notes, paragraph 39.

(e) Includes ACT prisoners held in ACT as well as ACT prisoners held in NSW – see Explanatory Notes, paragraph 19.

PERSONS IN FULL-TIME CUSTODY, By sex

	NSW(a)	Vic. (b)	Qld(c)	SA	WA	Tas.	NT	ACT in ACT(d)	ACT in NSW(a)	ACT Total(e)	Aust. (a)(b)(c)
MALES (AVERAGE DAILY NUMBER)											
2005	8 396	3 358	4 988	1 425	3 190	495	766	63	113	176	22 679
2006	8 601	3 588	5 168	1 488	3 257	478	771	60	108	169	23 412
2007	8 867	3 894	5 151	1 658	3 459	502	817	65	96	162	24 415
2007											
Sep Qtr	8 885	3 929	5 100	1 678	3 542	507	804	71	93	163	24 513
Dec Qtr	8 839	3 965	5 037	1 700	3 543	521	806	69	94	162	24 480
2008											
Mar Qtr	8 918	3 890	5 055	1 750	3 463	496	856	79	93	172	24 506
Jun Qtr	9 025	3 946	5 138	1 778	3 471	488	877	80	85	165	24 803
Sep Qtr	9 201	4 057	5 155	1 809	3 575	482	899	88	68	157	25 267
Jul	9 194	4 023	5 132	1 812	3 536	472	888	91	74	165	25 146
Aug	9 217	4 068	5 136	1 814	3 571	477	900	86	68	154	25 270
Sep	9 192	4 082	5 199	1 802	3 618	499	909	88	63	150	25 388
FEMALES (AVERAGE DAILY NUMBER)											
2005	647	253	364	95	255	31	26	3	6	9	1 674
2006	679	237	401	102	260	40	32	6	7	12	1 757
2007	709	249	419	118	315	35	39	6	5	11	1 890
2007											
Sep Qtr	717	250	404	122	322	35	38	6	5	11	1 894
Dec Qtr	710	251	408	122	316	40	37	7	7	14	1 892
2008											
Mar Qtr	698	236	411	133	290	34	41	11	8	19	1 853
Jun Qtr	752	239	409	124	262	40	41	8	8	16	1 875
Sep Qtr	709	251	444	126	287	40	48	8	5	13	1 913
Jul	722	250	438	132	280	45	46	7	7	14	1 920
Aug	703	252	451	128	281	38	48	9	4	13	1 910
Sep	703	250	444	118	300	35	51	9	3	12	1 910
PERSONS (AVERAGE DAILY NUMBER)											
2005	9 043	3 610	5 351	1 521	3 445	526	791	66	119	185	24 353
2006	9 281	3 825	5 569	1 590	3 517	518	803	66	115	181	25 169
2007	9 576	4 144	5 571	1 776	3 774	537	856	71	101	172	26 305
2007											
Sep Qtr	9 602	4 179	5 504	1 800	3 863	541	842	76	97	174	26 407
Dec Qtr	9 550	4 216	5 446	1 822	3 859	561	843	75	101	176	26 372
2008											
Mar Qtr	9 616	4 126	5 466	1 882	3 753	530	896	90	101	191	26 359
Jun Qtr	9 777	4 185	5 547	1 902	3 733	527	919	88	94	181	26 677
Sep Qtr	9 910	4 308	5 599	1 936	3 862	522	947	97	73	170	27 180
Jul	9 916	4 272	5 569	1 944	3 816	517	934	98	82	180	27 067
Aug	9 919	4 319	5 588	1 942	3 852	516	948	95	72	167	27 179
Sep	9 895	4 333	5 643	1 920	3 918	534	960	97	66	163	27 299

(a) Includes ACT prisoners held in NSW prisons. The ACT in NSW figures are a subset of the NSW figures and are not separately counted in the Australian totals – see Explanatory Notes, paragraph 17.

(b) As of 1 July 2005, the definition of an adult changed in Vic. to a person aged 18 years and over – see Explanatory Notes, paragraph 38.

(c) Data prior to the September quarter 2007 may be slightly overstated – see Explanatory Notes, paragraph 39.

(d) Refers to unsentenced persons in ACT prison custody and may include some sentenced fine default only prisoners – see Explanatory Notes, paragraph 17.

(e) ACT in ACT figures and ACT in NSW figures may not add to ACT total due to rounding.

IMPRISONMENT RATES(a), By sex

	NSW(b)	Vic. (c)	Qld(d)	SA	WA	Tas.	NT	ACT(e)	Aust. (c) (d)
MALES (RATE PER 100,000 ADULT POPULATION)									
2005	325.6	177.2	333.5	243.4	423.5	276.6	1 017.4	144.3	296.5
2006	330.4	188.3	336.7	251.7	422.8	264.9	996.7	136.5	301.9
2007	339.7	199.7	326.5	276.4	435.7	275.6	1 031.6	126.7	309.4
2007									
Sep Qtr	340.8	200.6	321.9	278.9	443.8	277.4	1 013.1	127.0	309.8
Dec Qtr	338.1	201.6	316.0	281.9	441.1	284.8	1 008.0	125.5	308.1
2008									
Mar Qtr	340.0	196.9	315.5	289.3	428.1	270.4	1 060.2	132.5	307.1
Jun Qtr	343.5	199.2	318.8	293.3	426.4	265.0	1 080.3	127.2	309.6
Sep Qtr	349.3	203.5	317.6	297.1	435.0	261.1	1 101.4	120.1	313.5
Jul	348.8	201.8	316.1	297.6	430.3	255.3	1 087.8	126.7	312.0
Aug	349.9	204.0	316.4	297.9	434.6	258.4	1 103.3	118.3	313.6
Sep	349.1	204.8	320.3	295.9	440.3	270.0	1 113.5	115.3	315.0
FEMALES (RATE PER 100,000 ADULT POPULATION)									
2005	24.4	12.7	23.9	15.7	33.5	16.7	38.3	7.1	21.2
2006	25.4	11.8	25.8	16.7	33.6	20.8	46.9	9.7	22.0
2007	26.3	12.3	26.1	18.9	39.8	18.2	53.6	8.0	23.2
2007									
Sep Qtr	26.6	12.3	25.0	19.4	40.6	17.9	52.4	7.9	23.2
Dec Qtr	26.2	12.2	25.1	19.3	39.7	20.8	51.0	10.3	23.1
2008									
Mar Qtr	25.6	11.4	25.2	21.0	36.2	17.8	54.9	14.2	22.5
Jun Qtr	27.4	11.6	24.9	19.5	32.5	20.4	55.4	12.2	22.7
Sep Qtr	25.9	12.1	26.9	19.8	35.3	20.3	64.7	9.7	23.0
Jul	26.3	12.0	26.5	20.7	34.5	23.2	61.7	10.6	23.1
Aug	25.7	12.1	27.3	20.1	34.6	19.7	64.0	9.4	23.0
Sep	25.7	12.0	26.8	18.5	36.9	18.0	68.5	9.2	23.0
PERSONS (RATE PER 100,000 ADULT POPULATION)									
2005	172.7	93.0	177.3	127.4	227.5	143.3	556.8	74.4	156.8
2006	175.6	98.0	180.1	132.0	227.5	139.7	552.3	72.0	160.0
2007	180.1	104.0	175.0	144.9	238.2	143.4	566.5	66.3	164.2
2007									
Sep Qtr	180.6	104.5	172.1	146.2	243.0	144.1	553.0	66.4	164.3
Dec Qtr	179.1	105.0	169.2	147.7	241.3	149.2	550.0	66.9	163.4
2008									
Mar Qtr	179.8	102.3	169.0	152.2	233.1	140.7	579.6	72.4	162.7
Jun Qtr	182.3	103.4	170.5	153.3	230.3	139.4	590.4	68.7	163.9
Sep Qtr	184.4	105.8	170.9	155.4	236.2	137.6	606.0	64.0	166.1
Jul	184.3	104.9	170.0	156.1	233.4	136.2	597.5	67.7	165.4
Aug	184.6	106.1	170.5	155.9	235.6	135.9	606.7	63.0	166.1
Sep	184.2	106.4	172.2	154.1	239.6	140.7	614.1	61.4	166.8

(a) Imprisonment rates from the June quarter 2007 have been calculated using preliminary ERP rebased on the 2006 Census of Population and Housing – see Explanatory Notes, paragraphs 23–24.

(b) Excludes ACT prisoners held in NSW prisons.

(c) As of 1 July 2005, the definition of an adult changed in Vic. to a person aged 18 years and over – see Explanatory Notes, paragraph 38.

(d) Data prior to the September quarter 2007 may be slightly overstated – see Explanatory Notes, paragraph 39.

(e) Includes ACT prisoners held in ACT as well as ACT prisoners held in NSW – see Explanatory Notes, paragraph 19.

INDIGENOUS PERSONS IN FULL-TIME CUSTODY(a), By sex

	NSW(b)	Vic. (c)	Qld(d)	SA	WA	Tas.	NT	ACT in ACT(e)	ACT in NSW(b)	ACT Total(f)	Aust. (b)(c)(d)
MALES (AVERAGE DAILY NUMBER)											
2005	1 578	177	1 236	259	1 257	61	609	8	4	12	5 185
2006	1 716	202	1 379	281	1 274	53	637	8	9	17	5 548
2007	1 771	214	1 355	349	1 420	59	671	8	11	19	5 847
2007											
Sep Qtr	1 772	223	1 309	368	1 472	62	666	8	9	17	5 880
Dec Qtr	1 768	216	1 307	363	1 442	60	657	7	11	18	5 820
2008											
Mar Qtr	1 817	219	1 352	381	1 398	57	704	10	9	19	5 938
Jun Qtr	1 836	226	1 402	391	1 394	58	723	11	8	19	6 042
Sep Qtr	1 882	237	1 361	375	1 463	61	741	12	7	19	6 133
Jul	1 881	241	1 377	377	1 440	55	731	13	6	19	6 115
Aug	1 889	237	1 356	373	1 459	61	741	13	7	19	6 128
Sep	1 877	234	1 350	374	1 490	67	753	12	8	20	6 157
FEMALES (AVERAGE DAILY NUMBER)											
2005	182	17	98	24	131	6	20	—	—	—	479
2006	194	13	114	24	134	8	23	1	—	1	512
2007	209	15	115	29	175	7	32	1	—	1	584
2007											
Sep Qtr	221	15	107	31	178	7	33	1	—	1	593
Dec Qtr	213	13	102	28	174	8	31	2	—	2	571
2008											
Mar Qtr	212	16	114	30	153	8	33	3	1	4	569
Jun Qtr	234	16	109	27	136	7	33	2	1	2	564
Sep Qtr	200	18	120	26	141	9	41	2	1	3	557
Jul	208	19	120	29	140	9	38	2	1	3	565
Aug	200	17	125	27	137	9	41	2	1	3	559
Sep	192	17	117	22	145	8	44	3	—	3	546
PERSONS (AVERAGE DAILY NUMBER)											
2005	1 761	194	1 334	284	1 388	67	629	8	4	12	5 664
2006	1 910	215	1 492	305	1 408	61	660	9	9	18	6 060
2007	1 980	229	1 471	378	1 594	66	703	9	11	20	6 430
2007											
Sep Qtr	1 993	238	1 417	399	1 650	69	699	8	9	18	6 473
Dec Qtr	1 982	229	1 409	390	1 616	68	688	9	11	20	6 391
2008											
Mar Qtr	2 028	235	1 466	412	1 551	66	737	13	10	23	6 507
Jun Qtr	2 070	242	1 511	418	1 530	65	756	13	8	22	6 605
Sep Qtr	2 082	255	1 482	401	1 604	70	782	15	8	22	6 690
Jul	2 089	261	1 497	406	1 580	65	769	14	7	22	6 680
Aug	2 089	254	1 481	400	1 596	70	782	15	8	23	6 688
Sep	2 069	251	1 466	396	1 635	75	796	15	8	23	6 703

— nil or rounded to zero (including null cells)

(a) Excludes persons whose Indigenous status is unknown – see Explanatory Notes, paragraph 33.

(b) Includes ACT prisoners held in NSW prisons. The ACT in NSW figures are a subset of the NSW figures and are not separately counted in the Australian totals – see Explanatory Notes, paragraph 17.

(c) As of 1 July 2005, the definition of an adult changed in Vic. to a person aged 18 years and over – see Explanatory Notes, paragraph 38.

(d) Data prior to the September quarter 2007 may be slightly overstated – see Explanatory Notes, paragraph 39.

(e) Refers to unsentenced persons in ACT prison custody and may include some sentenced fine default only prisoners – see Explanatory Notes, paragraph 17.

(f) ACT in ACT figures and ACT in NSW figures may not add to ACT total due to rounding.

INDIGENOUS IMPRISONMENT RATES(a)(b), By sex

	NSW(c)	Vic.(d)	Qld(e)	SA	WA	Tas.	NT	ACT(f)	Aust.(d)(e)
MALES (RATE PER 100,000 ADULT INDIGENOUS POPULATION)									
2005	4 074.1	2 033.0	3 331.5	3 408.0	6 478.5	1 232.2	3 490.8	1 000.8	3 839.3
2006	4 318.0	2 288.5	3 604.8	3 591.2	6 382.1	1 038.6	3 577.3	1 366.7	4 006.0
2007	4 344.4	2 350.2	3 437.0	4 358.6	6 925.4	1 124.6	3 694.1	1 483.6	4 111.4
2007									
Sep Qtr	4 351.8	2 454.7	3 320.1	4 595.7	7 180.7	1 193.5	3 664.7	1 318.9	4 135.2
Dec Qtr	4 338.7	2 372.5	3 315.2	4 528.1	7 033.5	1 158.5	3 613.9	1 415.1	4 092.9
2008									
Mar Qtr	4 353.6	2 326.9	3 319.6	4 646.2	6 644.3	1 072.1	3 796.0	1 434.9	4 064.0
Jun Qtr	4 402.7	2 403.0	3 441.3	4 764.2	6 625.7	1 088.5	3 897.8	1 472.6	4 134.6
Sep Qtr	4 515.9	2 522.5	3 341.6	4 565.3	6 952.3	1 141.6	3 997.5	1 487.4	4 197.2
Jul	4 513.9	2 563.7	3 381.4	4 593.6	6 843.3	1 030.6	3 941.2	1 452.6	4 184.8
Aug	4 532.0	2 518.9	3 328.9	4 544.9	6 934.1	1 140.5	3 994.7	1 487.0	4 193.9
Sep	4 501.4	2 483.5	3 313.4	4 557.1	7 083.8	1 257.5	4 058.7	1 523.7	4 213.5
FEMALES (RATE PER 100,000 ADULT INDIGENOUS POPULATION)									
2005	447.4	190.0	239.5	299.3	631.7	115.1	107.2	14.1	332.0
2006	463.9	145.0	270.8	291.3	628.1	149.4	124.9	78.3	346.2
2007	488.2	158.1	267.7	336.1	793.4	138.5	167.3	68.6	384.5
2007									
Sep Qtr	514.7	160.3	249.2	354.1	808.4	134.8	173.0	58.9	390.6
Dec Qtr	497.6	136.9	236.2	319.8	791.2	150.6	164.4	135.6	376.3
2008									
Mar Qtr	480.5	162.3	257.2	341.1	677.7	153.6	168.3	303.8	365.9
Jun Qtr	532.4	167.6	245.8	303.4	599.9	130.5	169.5	186.9	362.5
Sep Qtr	454.9	184.5	272.2	292.8	622.9	159.8	210.3	207.4	358.2
Jul	471.8	201.0	270.5	326.0	620.5	170.8	195.7	190.9	363.5
Aug	454.9	177.6	282.5	303.5	607.2	169.0	210.8	234.3	359.7
Sep	437.4	174.6	263.4	247.3	641.6	138.8	224.9	196.9	351.3
PERSONS (RATE PER 100,000 ADULT INDIGENOUS POPULATION)									
2005	2 211.8	1 097.2	1 710.0	1 798.4	3 452.9	662.6	1 760.5	502.4	2 027.7
2006	2 336.5	1 202.2	1 860.2	1 881.1	3 404.6	586.0	1 810.6	715.1	2 116.2
2007	2 361.1	1 238.5	1 781.5	2 269.4	3 750.4	623.2	1 891.0	767.6	2 187.5
2007									
Sep Qtr	2 378.3	1 291.2	1 716.0	2 392.6	3 881.3	655.2	1 879.6	681.4	2 202.1
Dec Qtr	2 363.1	1 238.8	1 706.9	2 342.4	3 801.4	646.0	1 850.3	767.6	2 174.3
2008									
Mar Qtr	2 362.8	1 229.5	1 725.3	2 406.9	3 554.3	606.7	1 943.4	863.3	2 157.4
Jun Qtr	2 413.3	1 269.8	1 777.7	2 444.0	3 505.1	603.1	1 993.8	822.9	2 189.8
Sep Qtr	2 428.5	1 337.3	1 743.6	2 343.0	3 674.4	644.1	2 063.4	840.6	2 217.9
Jul	2 436.2	1 365.9	1 761.8	2 373.9	3 620.6	595.0	2 028.4	815.1	2 214.6
Aug	2 436.3	1 332.0	1 742.9	2 338.8	3 657.5	648.3	2 062.3	854.0	2 217.1
Sep	2 412.4	1 313.0	1 725.5	2 315.4	3 747.5	690.7	2 100.8	853.3	2 222.3

(a) The rates calculation uses the Indigenous population projections for 30 June of that calendar year as the denominator – see Explanatory Notes, paragraphs 25–27.

(b) Excludes persons whose Indigenous status is unknown – see Explanatory Notes, paragraph 33.

(c) Excludes ACT prisoners held in NSW prisons.

(d) As of 1 July 2005, the definition of an adult changed in Vic. to a person aged 18 years and over – see Explanatory Notes, paragraph 38.

(e) Data prior to the September quarter 2007 may be slightly overstated – see Explanatory Notes, paragraph 39.

(f) Includes ACT prisoners held in ACT as well as ACT prisoners held in NSW – see Explanatory Notes, paragraph 19.

PERSONS IN FULL-TIME CUSTODY, By type of custody

	NSW(a) (b)	Vic. (c)	Qld(d)	SA	WA	Tas.	NT	ACT in ACT(e)	ACT in NSW(a)	ACT Total(f)	Aust. (g)
PERSONS IN SECURE CUSTODY (AVERAGE DAILY NUMBER)											
2005	5 207	3 225	4 500	1 348	2 489	442	622	66	29	95	17 901
2006	5 736	3 443	4 766	1 413	2 608	444	616	66	33	99	19 093
2007	5 893	3 743	4 853	1 581	2 771	477	621	71	26	97	20 010
2007											
Sep Qtr	5 855	3 771	4 815	1 605	2 831	480	613	76	22	99	20 045
Dec Qtr	5 867	3 795	4 799	1 622	2 756	499	614	75	27	102	20 027
2008											
Mar Qtr	5 942	3 693	4 895	1 684	2 735	468	641	90	26	116	20 147
Jun Qtr	6 237	3 753	4 936	1 704	2 764	470	649	88	29	116	20 600
Sep Qtr	6 295	3 854	4 974	1 737	2 862	467	662	97	24	121	20 949
Jul	6 272	3 829	4 934	1 744	2 853	466	650	98	30	128	20 845
Aug	6 275	3 861	4 971	1 744	2 860	461	659	95	21	116	20 925
Sep	6 340	3 873	5 020	1 721	2 875	475	679	97	22	119	21 080
PERSONS IN OPEN CUSTODY (AVERAGE DAILY NUMBER)											
2005	3 835	385	851	172	956	84	169	..	89	89	6 452
2006	3 545	381	803	177	909	74	187	..	82	82	6 076
2007	3 683	401	717	195	1 003	61	235	..	75	75	6 295
2007											
Sep Qtr	3 747	409	689	195	1 032	61	229	..	75	75	6 362
Dec Qtr	3 683	421	647	200	1 103	62	229	..	74	74	6 346
2008											
Mar Qtr	3 674	432	571	199	1 018	63	255	..	75	75	6 212
Jun Qtr	3 540	432	612	198	969	57	270	..	65	65	6 078
Sep Qtr	3 615	454	625	199	999	55	285	..	49	49	6 232
Jul	3 645	444	636	200	963	51	284	..	52	52	6 222
Aug	3 644	459	617	198	992	55	289	..	51	51	6 254
Sep	3 554	459	623	199	1 044	59	281	..	44	44	6 219
PERSONS IN CUSTODY (AVERAGE DAILY NUMBER)											
2005	9 043	3 610	5 351	1 521	3 445	526	791	66	119	185	24 353
2006	9 281	3 825	5 569	1 590	3 517	518	803	66	115	181	25 169
2007	9 576	4 144	5 571	1 776	3 774	537	856	71	101	172	26 305
2007											
Sep Qtr	9 602	4 179	5 504	1 800	3 863	541	842	76	97	174	26 407
Dec Qtr	9 550	4 216	5 446	1 822	3 859	561	843	75	101	176	26 372
2008											
Mar Qtr	9 616	4 126	5 466	1 882	3 753	530	896	90	101	191	26 359
Jun Qtr	9 777	4 185	5 547	1 902	3 733	527	919	88	94	181	26 677
Sep Qtr	9 910	4 308	5 599	1 936	3 862	522	947	97	73	170	27 180
Jul	9 916	4 272	5 569	1 944	3 816	517	934	98	82	180	27 067
Aug	9 919	4 319	5 588	1 942	3 852	516	948	95	72	167	27 179
Sep	9 895	4 333	5 643	1 920	3 918	534	960	97	66	163	27 299

.. not applicable

- (a) Includes ACT prisoners held in NSW prisons. The ACT in NSW figures are a subset of the NSW figures and are not separately counted in the Australian totals – see Explanatory Notes, paragraph 17.
- (b) The classification of some NSW correctional facilities changed from March 2008 and July 2005 – see Explanatory Notes, paragraphs 34–35.
- (c) As of 1 July 2005, the definition of an adult changed in Vic. to a person aged 18 years and over – see Explanatory Notes, paragraph 38.
- (d) Data prior to the September quarter 2007 may be slightly overstated – see Explanatory Notes, paragraph 39.
- (e) Refers to unsentenced persons in ACT prison custody and may include some sentenced fine default only prisoners – see Explanatory Notes, paragraph 17.
- (f) ACT in ACT figures and ACT in NSW figures may not add to ACT total due to rounding.
- (g) See footnotes a, b, c and d.

IMPRISONMENT RATES(a), By type of custody

	NSW(b)(c)	Vic.(d)	Qld(e)	SA	WA	Tas.	NT	ACT(f)	Aust.(c)(d)(e)	
PERSONS IN SECURE CUSTODY (RATE PER 100,000 ADULT POPULATION)										
2005	100.2	83.1	149.1	113.0	164.4	120.5	437.7	38.4	115.3	
2006	109.3	88.2	154.1	117.3	168.7	119.9	423.8	39.5	121.4	
2007	111.5	93.9	152.5	129.0	174.9	127.3	410.9	37.5	124.9	
2007										
Sep Qtr	110.8	94.3	150.5	130.4	178.0	127.8	402.5	37.7	124.7	
Dec Qtr	110.7	94.5	149.1	131.5	172.3	132.7	400.4	38.9	124.1	
2008										
Mar Qtr	111.8	91.6	151.3	136.1	169.9	124.1	414.5	44.0	124.3	
Jun Qtr	116.9	92.7	151.7	137.4	170.5	124.4	417.1	44.2	126.6	
Sep Qtr	117.5	94.6	151.8	139.4	175.1	123.1	423.9	45.5	128.0	
Jul	117.0	94.0	150.6	140.0	174.5	122.9	415.7	48.1	127.4	
Aug	117.2	94.8	151.7	140.0	174.9	121.4	421.7	43.7	127.9	
Sep	118.4	95.1	153.2	138.2	175.8	125.1	434.5	44.7	128.8	
PERSONS IN OPEN CUSTODY (RATE PER 100,000 ADULT POPULATION)										
2005	72.5	9.9	28.2	14.4	63.1	22.8	119.1	36.0	41.5	
2006	66.3	9.8	26.0	14.7	58.8	19.9	128.5	32.5	38.6	
2007	68.6	10.1	22.5	15.9	63.3	16.2	155.6	28.8	39.3	
2007										
Sep Qtr	69.8	10.2	21.5	15.8	64.9	16.4	150.5	28.8	39.6	
Dec Qtr	68.4	10.5	20.1	16.2	69.0	16.6	149.7	28.1	39.3	
2008										
Mar Qtr	68.0	10.7	17.6	16.1	63.2	16.6	165.1	28.4	38.3	
Jun Qtr	65.4	10.7	18.8	16.0	59.8	15.0	173.4	24.6	37.4	
Sep Qtr	66.8	11.1	19.1	16.0	61.1	14.5	182.2	18.5	38.1	
Jul	67.3	10.9	19.4	16.1	58.9	13.3	181.8	19.6	38.0	
Aug	67.3	11.3	18.8	15.9	60.7	14.5	184.9	19.3	38.2	
Sep	65.8	11.3	19.0	16.0	63.8	15.6	179.7	16.6	38.0	
PERSONS IN CUSTODY (RATE PER 100,000 ADULT POPULATION)										
2005	172.7	93.0	177.3	127.4	227.5	143.3	556.8	74.4	156.8	
2006	175.6	98.0	180.1	132.0	227.5	139.7	552.3	72.0	160.0	
2007	180.1	104.0	175.0	144.9	238.2	143.4	566.5	66.3	164.2	
2007										
Sep Qtr	180.6	104.5	172.1	146.2	243.0	144.1	553.0	66.4	164.3	
Dec Qtr	179.1	105.0	169.2	147.7	241.3	149.2	550.0	66.9	163.4	
2008										
Mar Qtr	179.8	102.3	169.0	152.2	233.1	140.7	579.6	72.4	162.7	
Jun Qtr	182.3	103.4	170.5	153.3	230.3	139.4	590.4	68.7	163.9	
Sep Qtr	184.4	105.8	170.9	155.4	236.2	137.6	606.0	64.0	166.1	
Jul	184.3	104.9	170.0	156.1	233.4	136.2	597.5	67.7	165.4	
Aug	184.6	106.1	170.5	155.9	235.6	135.9	606.7	63.0	166.1	
Sep	184.2	106.4	172.2	154.1	239.6	140.7	614.1	61.4	166.8	
(a)	Imprisonment rates from the June quarter 2007 have been calculated using preliminary ERP rebased on the 2006 Census of Population and Housing – see Explanatory Notes, paragraphs 23–24.				(d) As of 1 July 2005, the definition of an adult changed in Vic. to a person aged 18 years and over – see Explanatory Notes, paragraph 38.					
(b)	Excludes ACT prisoners held in NSW prisons.				(e) Data prior to the September quarter 2007 may be slightly overstated – see Explanatory Notes, paragraph 39.					
(c)	The classification of some NSW correctional facilities changed from March 2008 and July 2005 – see Explanatory Notes, paragraphs 34–35.				(f) Includes ACT prisoners held in ACT as well as ACT prisoners held in NSW – see Explanatory Notes, paragraph 19.					

PERSONS IN FULL-TIME CUSTODY(a), By legal status

	NSW(b)	Vic. (c)	Qld(d)	SA	WA	Tas.	NT	ACT in ACT(e)	ACT in NSW(b)	ACT Total(f)	Aust. (b)(c)(d)
UNSENTENCED (NUMBER ON FIRST DAY OF MONTH)											
2005	2 096	651	1 078	521	553	119	144	67	—	67	5 229
2006	2 221	700	1 176	548	603	120	164	65	—	65	5 597
2007	2 400	785	1 251	619	682	115	170	67	—	67	6 089
2007											
Sep Qtr	2 378	813	1 272	631	700	116	158	67	—	67	6 135
Dec Qtr	2 470	801	1 195	612	676	111	166	73	—	73	6 105
2008											
Mar Qtr	2 554	794	1 260	649	723	114	210	82	—	82	6 386
Jun Qtr	2 571	855	1 255	645	756	117	198	86	—	86	6 482
Sep Qtr	2 523	827	1 227	668	791	113	214	92	—	92	6 456
SENTENCED (NUMBER ON FIRST DAY OF MONTH)											
2005	6 933	2 963	4 255	1 016	2 890	409	647	1	120	121	19 112
2006	7 049	3 105	4 367	1 048	2 906	398	637	1	115	116	19 509
2007	7 170	3 351	4 312	1 161	3 073	419	687	1	101	101	20 174
2007											
Sep Qtr	7 217	3 359	4 239	1 176	3 140	418	699	1	97	98	20 249
Dec Qtr	7 089	3 439	4 245	1 222	3 214	455	673	—	101	102	20 338
2008											
Mar Qtr	7 050	3 316	4 159	1 235	3 026	405	691	1	101	102	19 882
Jun Qtr	7 188	3 321	4 290	1 265	2 965	418	710	—	92	92	20 158
Sep Qtr	7 417	3 458	4 336	1 294	3 037	407	730	—	69	70	20 679
TOTAL (NUMBER ON FIRST DAY OF MONTH)											
2005	9 029	3 614	5 333	1 537	3 442	528	791	68	120	188	24 341
2006	9 269	3 805	5 543	1 595	3 509	518	801	65	115	180	25 106
2007	9 570	4 137	5 563	1 781	3 755	534	857	68	101	168	26 264
2007											
Sep Qtr	9 594	4 172	5 511	1 807	3 840	534	857	68	97	165	26 384
Dec Qtr	9 559	4 240	5 441	1 833	3 890	567	839	73	101	175	26 442
2008											
Mar Qtr	9 604	4 110	5 419	1 884	3 749	518	900	84	101	185	26 268
Jun Qtr	9 759	4 176	5 545	1 910	3 721	535	907	86	92	178	26 640
Sep Qtr	9 940	4 286	5 563	1 962	3 828	519	944	92	69	162	27 135
Jul	9 904	4 231	5 545	1 948	3 764	515	946	95	77	172	26 948
Aug	9 987	4 314	5 573	2 003	3 839	511	935	96	67	163	27 258
Sep	9 930	4 312	5 571	1 936	3 880	532	952	86	64	150	27 199

— nil or rounded to zero (including null cells)

(a) Figures for the quarter and year for first day of month counts are calculated as a simple average – see Explanatory Notes, paragraph 5.

(b) Includes ACT prisoners held in NSW prisons. The ACT in NSW figures are a subset of the NSW figures and are not separately counted in the Australian totals – see Explanatory Notes, paragraph 17.

(c) As of 1 July 2005, the definition of an adult changed in Vic. to a person aged 18 years and over – see Explanatory Notes, paragraph 38.

(d) Data prior to the September quarter 2007 may be slightly overstated – see Explanatory Notes, paragraph 39.

(e) Refers to unsentenced persons in ACT prison custody and may include some sentenced fine default only prisoners – see Explanatory Notes, paragraph 17.

(f) ACT in ACT figures and ACT in NSW figures may not add to ACT total due to rounding.

IMPRISONMENT RATES(a), By legal status

	NSW(b)	Vic.(c)	Qld(d)	SA	WA	Tas.	NT	ACT(e)	Aust.(c)(d)
UNSENTENCED (RATE PER 100,000 ADULT POPULATION)									
2005	40.6	16.8	35.7	43.7	36.5	32.5	101.3	26.9	33.7
2006	42.5	17.9	38.0	45.5	39.0	32.4	112.8	25.7	35.6
2007	45.6	19.7	39.3	50.5	43.0	30.7	112.7	25.8	38.0
2007									
Sep Qtr	45.2	20.3	39.8	51.3	44.0	30.9	103.8	25.6	38.2
Dec Qtr	46.8	19.9	37.1	49.6	42.3	29.6	108.5	27.8	37.8
2008									
Mar Qtr	48.2	19.7	38.9	52.5	44.9	30.2	135.6	31.3	39.4
Jun Qtr	48.4	21.1	38.6	52.0	46.6	30.9	127.0	32.6	39.8
Sep Qtr	47.3	20.3	37.5	53.6	48.4	29.7	137.1	34.7	39.4
SENTENCED (RATE PER 100,000 ADULT POPULATION)									
2005	131.9	76.3	140.9	85.1	190.8	111.4	455.1	48.7	123.1
2006	132.8	79.5	141.2	87.0	188.0	107.5	438.0	45.9	124.0
2007	134.4	84.1	135.5	94.7	194.0	111.8	454.8	39.1	125.9
2007									
Sep Qtr	135.3	84.0	132.5	95.6	197.5	111.3	459.4	37.5	126.0
Dec Qtr	132.4	85.6	131.9	99.0	200.9	121.1	438.8	38.7	126.0
2008									
Mar Qtr	131.3	82.2	128.6	99.8	188.0	107.4	446.8	38.8	122.7
Jun Qtr	133.6	82.1	131.8	102.0	183.0	110.5	456.1	34.9	123.9
Sep Qtr	137.7	84.9	132.3	103.9	185.7	107.2	467.1	26.3	126.4
TOTAL (RATE PER 100,000 ADULT POPULATION)									
2005	172.4	93.1	176.7	128.8	227.3	143.9	556.4	75.6	156.7
2006	175.4	97.5	179.3	132.4	227.0	139.9	550.8	71.6	159.6
2007	180.0	103.8	174.8	145.3	237.0	142.5	567.4	64.9	163.9
2007									
Sep Qtr	180.5	104.3	172.3	146.9	241.5	142.2	563.2	63.1	164.2
Dec Qtr	179.3	105.6	169.1	148.6	243.2	150.7	547.4	66.4	163.9
2008									
Mar Qtr	179.5	101.9	167.5	152.3	232.9	137.5	582.4	70.1	162.1
Jun Qtr	182.0	103.2	170.4	154.0	229.6	141.5	583.2	67.5	163.7
Sep Qtr	185.0	105.2	169.8	157.5	234.1	136.9	604.2	60.9	165.8
Jul	184.2	103.9	169.2	156.4	230.2	135.7	605.3	64.8	164.7
Aug	185.9	105.9	170.1	160.8	234.8	134.7	598.2	61.4	166.6
Sep	184.9	105.9	170.0	155.4	237.3	140.2	609.1	56.5	166.2

(a) Imprisonment rates from the June quarter 2007 have been calculated using preliminary ERP rebased on the 2006 Census of Population and Housing – see Explanatory Notes, paragraphs 23–24.

(b) Excludes ACT prisoners held in NSW prisons.

(c) As of 1 July 2005, the definition of an adult changed in Vic. to a person aged 18 years and over – see Explanatory Notes, paragraph 38.

(d) Data prior to the September quarter 2007 may be slightly overstated – see Explanatory Notes, paragraph 39.

(e) Includes ACT prisoners held in ACT as well as ACT prisoners held in NSW – see Explanatory Notes, paragraph 19.

	NSW(c)	Vic. (d)	Qld(e)	SA	WA	Tas.	NT	ACT in ACT(f)	ACT in NSW(c)	ACT Total(g)	Aust. (c) (d) (e)
UNSENTENCED (NUMBER ON FIRST DAY OF MONTH)											
2005	392	44	249	118	210	18	105	8	—	8	1 144
2006	441	48	285	116	241	19	140	10	—	10	1 300
2007	451	52	331	160	278	14	143	9	—	9	1 437
2007											
Sep Qtr	448	58	347	174	293	15	136	8	—	8	1 479
Dec Qtr	457	47	306	159	263	12	143	8	—	8	1 395
2008											
Mar Qtr	515	51	353	173	297	14	176	12	—	12	1 591
Jun Qtr	507	53	355	181	319	15	163	14	—	14	1 607
Sep Qtr	462	52	341	154	313	13	176	14	—	14	1 526
SENTENCED (NUMBER ON FIRST DAY OF MONTH)											
2005	1 372	150	1 086	172	1 181	50	522	—	4	4	4 533
2006	1 473	166	1 206	193	1 162	42	518	—	10	10	4 761
2007	1 520	176	1 135	217	1 311	53	564	—	10	10	4 975
2007											
Sep Qtr	1 536	180	1 070	228	1 356	53	577	—	10	10	5 000
Dec Qtr	1 509	184	1 089	234	1 374	58	549	—	10	10	4 997
2008											
Mar Qtr	1 489	185	1 097	237	1 257	51	563	—	10	10	4 879
Jun Qtr	1 544	184	1 157	247	1 211	51	580	—	9	9	4 975
Sep Qtr	1 628	202	1 149	248	1 266	55	603	—	8	8	5 151
TOTAL (NUMBER ON FIRST DAY OF MONTH)											
2005	1 764	194	1 335	289	1 391	69	627	8	4	12	5 677
2006	1 913	214	1 492	309	1 404	61	659	10	10	19	6 061
2007	1 971	228	1 466	377	1 589	67	706	9	10	19	6 412
2007											
Sep Qtr	1 984	238	1 417	402	1 649	68	713	8	10	18	6 479
Dec Qtr	1 966	231	1 395	394	1 637	70	692	8	10	18	6 392
2008											
Mar Qtr	2 004	235	1 451	410	1 554	65	739	12	10	22	6 470
Jun Qtr	2 050	237	1 512	429	1 530	67	744	14	9	22	6 582
Sep Qtr	2 090	253	1 490	402	1 579	68	779	14	8	22	6 677

— nil or rounded to zero (including null cells)

- (a) Figures for the quarter and year for first day of the month counts are calculated as a simple average – see Explanatory Notes, paragraph 5.
- (b) Excludes persons whose Indigenous status is unknown – see Explanatory Notes, paragraph 33.
- (c) Includes ACT prisoners held in NSW prisons. The ACT in NSW figures are a subset of the NSW figures and are not separately counted in the Australian totals – see Explanatory Notes, paragraph 17.

- (d) As of 1 July 2005, the definition of an adult changed in Vic. to a person aged 18 years and over – see Explanatory Notes, paragraph 38.
- (e) Data prior to the September quarter 2007 may be slightly overstated – see Explanatory Notes, paragraph 39.
- (f) Refers to unsentenced persons in ACT prison custody and may include some sentenced fine default only prisoners – see Explanatory Notes, paragraph 17.
- (g) ACT in ACT figures and ACT in NSW figures may not add to ACT total due to rounding.

	NSW(d)	Vic. (e)	Qld(f)	SA	WA	Tas.	NT	ACT(g)	Aust.(e)(f)
UNSENTENCED (RATE PER 100,000 ADULT INDIGENOUS POPULATION)									
2005	494.0	250.9	319.1	745.2	522.0	179.5	294.2	329.5	409.6
2006	541.4	267.6	355.5	714.2	583.6	184.2	384.3	376.8	453.8
2007	540.3	281.1	401.5	960.8	653.0	133.0	383.2	335.8	488.8
2007									
Sep Qtr	537.5	314.0	420.4	1 044.3	688.5	138.5	365.8	310.0	503.0
Dec Qtr	547.5	252.6	370.7	956.3	618.7	113.3	384.6	322.9	474.6
2008									
Mar Qtr	602.4	265.4	415.8	1 013.5	679.8	132.1	464.4	453.9	527.4
Jun Qtr	593.0	275.8	417.8	1 060.2	730.2	141.3	431.0	516.9	532.6
Sep Qtr	541.1	270.6	400.9	898.5	718.0	122.9	465.3	542.1	505.8
SENTENCED (RATE PER 100,000 ADULT INDIGENOUS POPULATION)									
2005	1 721.9	848.5	1 392.6	1 088.7	2 938.3	498.2	1 461.9	159.7	1 622.8
2006	1 798.8	929.3	1 503.6	1 191.0	2 810.5	403.8	1 421.4	380.1	1 662.5
2007	1 810.2	952.4	1 374.7	1 300.9	3 084.6	497.4	1 515.7	400.4	1 692.5
2007									
Sep Qtr	1 829.9	972.7	1 296.7	1 366.4	3 189.9	503.7	1 552.7	374.5	1 701.1
Dec Qtr	1 798.0	996.2	1 319.3	1 406.4	3 231.5	550.9	1 475.6	374.5	1 700.1
2008									
Mar Qtr	1 731.8	967.2	1 291.4	1 383.8	2 880.3	470.1	1 484.6	365.6	1 617.4
Jun Qtr	1 796.6	963.7	1 362.0	1 446.1	2 774.9	473.2	1 531.3	327.8	1 649.3
Sep Qtr	1 896.5	1 056.2	1 352.6	1 450.0	2 900.9	507.0	1 591.1	290.0	1 707.7
TOTAL (RATE PER 100,000 ADULT INDIGENOUS POPULATION)									
2005	2 215.9	1 099.4	1 711.7	1 833.9	3 460.3	677.8	1 756.1	489.2	2 032.4
2006	2 340.2	1 196.9	1 859.1	1 905.2	3 394.1	588.0	1 805.8	757.0	2 116.2
2007	2 350.5	1 233.5	1 776.2	2 261.6	3 737.6	630.4	1 898.9	736.1	2 181.3
2007									
Sep Qtr	2 367.5	1 286.7	1 717.0	2 410.7	3 878.4	642.2	1 918.4	684.5	2 204.1
Dec Qtr	2 345.5	1 248.8	1 690.0	2 362.7	3 850.2	664.2	1 860.2	697.4	2 174.6
2008									
Mar Qtr	2 334.2	1 232.6	1 707.2	2 397.2	3 560.1	602.2	1 949.0	819.5	2 144.8
Jun Qtr	2 389.6	1 239.5	1 779.8	2 506.4	3 505.1	614.5	1 962.2	844.7	2 182.0
Sep Qtr	2 437.6	1 326.8	1 753.5	2 348.5	3 618.9	629.9	2 056.3	832.1	2 213.5

- (a) The rates calculation uses the Indigenous population projection for 30 June of the relevant calendar year as the denominator – see Explanatory Notes, paragraphs 25–27.
- (b) Figures for the quarter and year for first day of the month counts are calculated as a simple average – see Explanatory Notes, paragraph 5.
- (c) Excludes persons whose Indigenous status is unknown – see Explanatory Notes, paragraph 33.

- (d) Excludes ACT prisoners in NSW prisons.
- (e) As of 1 July 2005, the definition of an adult changed in Vic. to a person aged 18 years and over – see Explanatory Notes, paragraph 38.
- (f) Data prior to the September quarter 2007 may be slightly overstated – see Explanatory Notes, paragraph 39.
- (g) Includes ACT prisoners held in ACT as well as ACT prisoners held in NSW – see Explanatory Notes, paragraph 19.

SENTENCED PRISONER RECEPTIONS INTO FULL-TIME CUSTODY(a)

	NSW(b)	Vic. (c)	Qld	SA	WA	Tas.	NT	ACT in ACT	ACT in NSW(b)	ACT Total	Aust. (b) (c)
NUMBER											
2005	7 143	3 630	5 654	1 068	3 799	771	1 249	39	142	181	23 353
2006	8 056	3 863	6 045	1 210	3 331	836	1 350	53	128	181	24 744
2007	8 625	3 914	7 027	1 457	3 805	753	1 394	30	128	158	27 005
2007											
Sep Qtr	2 066	1 007	1 786	404	1 103	203	302	5	36	41	6 876
Dec Qtr	2 250	960	1 902	393	977	179	359	5	46	51	7 025
2008											
Mar Qtr	2 143	841	2 008	378	957	172	374	12	40	52	6 885
Jun Qtr	2 391	1 046	2 084	406	967	170	369	6	25	31	7 439
Sep Qtr	2 226	1 025	2 078	368	1 126	215	344	np	np	16	7 383

np not available for publication but included in totals where applicable, unless otherwise indicated

- (a) The count of sentenced prisoner receptions is an addition of the total number for each month within the reference period- see Explanatory Notes, paragraphs 2-5.
- (b) Includes ACT prisoners held in NSW prisons. The ACT in NSW figures are a subset of the NSW figures and are not separately counted in the Australian totals - see Explanatory Notes, paragraph 17.
- (c) As of 1 July 2005, the definition of an adult changed in Vic. to a person aged 18 years and over - see Explanatory Notes, paragraph 38.

	NSW		ACT(c)	
	no.(d)	rate(e)	no.(d)	rate(e)
MALES				
2005	762	30.0	76	62.6
2006	684	26.6	52	42.2
2007	685	26.5	54	42.7
2007				
Sep Qtr	682	26.4	60	47.0
Dec Qtr	704	27.2	49	37.8
2008				
Mar Qtr	623	24.0	39	30.2
Jun Qtr	620	23.8	56	43.2
Sep Qtr	674	25.8	53	40.7
Jul	655	25.0	57	43.7
Aug	675	25.8	55	41.8
Sep	693	26.5	48	36.6
FEMALES				
2005	73	2.8	6	4.7
2006	64	2.4	3	2.2
2007	74	2.8	5	4.1
2007				
Sep Qtr	67	2.5	6	4.7
Dec Qtr	71	2.7	5	3.6
2008				
Mar Qtr	74	2.7	4	2.7
Jun Qtr	72	2.7	5	4.0
Sep Qtr	57	2.1	6	4.3
Jul	59	2.2	6	4.1
Aug	56	2.1	5	4.0
Sep	56	2.1	7	4.8
PERSONS				
2005	835	16.2	82	33.1
2006	748	14.3	55	21.8
2007	759	14.4	60	23.0
2007				
Sep Qtr	748	14.2	67	25.5
Dec Qtr	775	14.7	54	20.4
2008				
Mar Qtr	696	13.2	43	16.2
Jun Qtr	692	13.0	61	23.2
Sep Qtr	731	13.7	59	22.2
Jul	714	13.4	63	23.6
Aug	731	13.7	60	22.6
Sep	749	14.0	54	20.4

- (a) Periodic detention is a form of custody only used in NSW and the ACT.
- (b) Imprisonment rates from the June quarter 2007 have been calculated using preliminary ERP rebased on the 2006 Census of Population and Housing – see Explanatory Notes, paragraphs 23–24.
- (c) ACT has reviewed the way it treats, and counts, periodic detention orders that have been breached. From the September quarter 2005 data may not be comparable with that previously published – see Explanatory Notes, paragraph 48.
- (d) Average daily number.
- (e) Rate per 100,000 adult population.

	NSW	Vic.	Qld	SA	WA	Tas.	NT	ACT	Aust.
MALES (NUMBER ON FIRST DAY OF MONTH)									
2005	322	73	68	12	77	8	11	4	575
2006	334	76	57	12	64	9	12	3	565
2007	338	76	66	14	52	5	16	5	572
2007									
Sep Qtr	340	75	66	14	50	9	15	5	574
Dec Qtr	344	77	70	25	54	7	14	6	598
2008									
Mar Qtr	327	75	65	24	51	3	12	3	560
Jun Qtr	320	80	71	24	43	4	18	1	562
Sep Qtr	324	89	69	20	40	7	9	1	559
FEMALES (NUMBER ON FIRST DAY OF MONTH)									
2005	48	6	15	4	9	2	1	1	85
2006	51	5	17	3	10	5	2	—	93
2007	58	5	16	2	7	3	—	—	93
2007									
Sep Qtr	56	5	20	2	8	4	—	—	96
Dec Qtr	65	4	16	2	7	3	—	1	97
2008									
Mar Qtr	70	5	22	1	8	4	—	—	110
Jun Qtr	73	8	23	3	7	6	—	1	122
Sep Qtr	73	8	22	5	8	9	1	—	126
PERSONS (NUMBER ON FIRST DAY OF MONTH)									
2005	369	79	83	16	85	11	12	5	660
2006	385	81	74	15	74	14	14	3	658
2007	396	81	82	16	59	9	16	5	664
2007									
Sep Qtr	396	80	86	16	58	13	15	6	669
Dec Qtr	409	81	86	26	61	11	14	7	695
2008									
Mar Qtr	397	80	87	25	59	7	12	3	670
Jun Qtr	393	89	94	27	51	11	18	2	684
Sep Qtr	398	97	90	24	48	16	10	2	685
Jul	395	99	95	27	47	12	np	np	688
Aug	398	98	90	24	49	17	np	np	686
Sep	400	95	86	22	48	19	8	3	681

— nil or rounded to zero (including null cells)

np not available for publication but included in totals where applicable, unless otherwise indicated

- (a) Counts reflect the state or territory in which a prisoner was sentenced, not where they were held in custody.
- (b) Figures for the quarter and year for the first day of the month counts are calculated as a simple average – see Explanatory Notes, paragraph 5.

	NSW	Vic. (c)	Qld	SA(d)	WA(e)	Tas.	NT	ACT	Aust. (c)(d)(e)
MALES (NUMBER ON FIRST DAY OF MONTH)									
2005	15 419	6 805	9 135	4 628	4 314	850	975	954	43 081
2006	15 140	6 214	9 468	4 552	4 203	935	1 011	914	42 438
2007	15 195	6 245	9 928	4 586	4 071	913	1 036	977	42 950
2007									
Sep Qtr	15 265	6 285	10 084	4 598	4 013	880	1 048	979	43 152
Dec Qtr	15 167	6 484	10 534	4 617	4 171	885	1 003	1 036	43 896
2008									
Mar Qtr	14 961	6 446	10 864	4 632	4 318	912	1 000	1 056	44 189
Jun Qtr	15 174	6 297	11 164	4 696	4 309	915	1 012	1 081	44 648
Sep Qtr	14 986	6 370	11 537	4 777	4 323	889	913	1 141	44 936
Jul	14 906	6 319	11 512	4 694	4 325	894	933	1 119	44 702
Aug	15 005	6 379	11 548	4 784	4 326	891	909	1 147	44 989
Sep	15 048	6 412	11 551	4 854	4 317	881	897	1 157	45 117
FEMALES (NUMBER ON FIRST DAY OF MONTH)									
2005	2 718	1 517	2 532	1 033	1 239	217	135	174	9 565
2006	2 649	1 345	2 656	1 045	1 192	249	144	168	9 447
2007	2 739	1 438	2 656	1 084	1 158	246	138	161	9 619
2007									
Sep Qtr	2 772	1 458	2 668	1 084	1 137	240	139	169	9 669
Dec Qtr	2 756	1 559	2 718	1 095	1 184	227	132	174	9 844
2008									
Mar Qtr	2 761	1 518	2 781	1 110	1 200	232	136	178	9 917
Jun Qtr	2 852	1 468	2 845	1 144	1 249	235	140	196	10 128
Sep Qtr	2 839	1 487	2 848	1 148	1 234	232	131	206	10 126
Jul	2 824	1 479	2 846	1 126	1 237	230	133	199	10 074
Aug	2 873	1 480	2 854	1 148	1 244	231	128	210	10 168
Sep	2 820	1 502	2 845	1 169	1 222	235	133	210	10 136
PERSONS (NUMBER ON FIRST DAY OF MONTH) (f)									
2005	18 200	8 384	11 667	5 672	5 553	1 067	1 110	1 128	52 782
2006	17 843	7 601	12 124	5 597	5 395	1 184	1 155	1 082	51 981
2007	18 002	7 710	12 584	5 671	5 229	1 159	1 173	1 138	52 665
2007									
Sep Qtr	18 107	7 769	12 752	5 683	5 150	1 120	1 187	1 148	52 916
Dec Qtr	17 980	8 069	13 253	5 712	5 354	1 111	1 134	1 209	53 823
2008									
Mar Qtr	17 777	7 989	13 645	5 742	5 518	1 144	1 136	1 234	54 185
Jun Qtr	18 089	7 787	14 009	5 840	5 558	1 150	1 152	1 277	54 862
Sep Qtr	17 898	7 874	14 385	5 926	5 557	1 121	1 044	1 347	55 152
Jul	17 800	7 815	14 358	5 821	5 562	1 124	1 066	1 318	54 864
Aug	17 952	7 875	14 402	5 933	5 570	1 122	1 037	1 357	55 248
Sep	17 942	7 931	14 396	6 024	5 539	1 116	1 030	1 367	55 345

- (a) Figures include persons with breached or suspended orders, with the exception of Vic. and Tas.
- (b) Figures for the quarter and year for first day of the month counts are calculated as a simple average – see Explanatory Notes, paragraph 5.
- (c) As of 1 July 2005, the definition of an adult changed in Vic. to a person aged 18 years and over – see Explanatory Notes, paragraph 38.
- (d) Data movements from June quarter 2005 may be influenced by data entry delays – see Explanatory Notes, paragraph 42.
- (e) Data prior to the March quarter 2007 may be slightly overstated – see Explanatory Notes, paragraph 43.
- (f) Includes persons whose sex is unknown.

	NSW	Vic. (d)	Qld	SA(e)	WA(f)	Tas.	NT	ACT	Aust. (d)(e)(f)
MALES (RATE PER 100,000 ADULT POPULATION)									
2005	606.2	359.2	610.8	790.5	572.7	475.4	1 296.4	783.2	563.3
2006	588.9	326.1	616.9	769.9	545.6	517.5	1 306.7	740.5	547.3
2007	588.6	320.2	629.2	764.7	512.8	500.7	1 307.0	766.0	544.2
2007									
Sep Qtr	591.8	320.9	636.5	764.3	502.9	481.7	1 321.3	762.0	545.4
Dec Qtr	586.4	329.7	660.8	765.5	519.2	483.6	1 254.5	800.9	552.4
2008									
Mar Qtr	576.5	326.3	677.9	766.0	533.8	497.1	1 239.2	814.6	553.7
Jun Qtr	583.0	317.9	692.7	774.7	529.4	497.2	1 245.6	834.1	557.4
Sep Qtr	573.2	319.6	710.7	784.5	526.0	481.1	1 118.7	874.2	557.6
Jul	570.1	317.0	709.2	770.9	526.3	484.0	1 143.2	857.4	554.7
Aug	573.9	320.0	711.4	785.6	526.4	482.4	1 113.8	878.8	558.3
Sep	575.5	321.7	711.6	797.1	525.3	476.9	1 099.1	886.5	559.8
FEMALES (RATE PER 100,000 ADULT POPULATION)									
2005	103.6	76.4	166.2	169.8	162.8	115.3	201.3	137.4	121.3
2006	100.0	67.4	170.6	170.4	153.8	131.2	211.0	130.8	118.4
2007	102.3	70.7	165.5	173.2	146.5	127.7	191.4	121.7	118.3
2007									
Sep Qtr	103.3	71.4	165.2	172.4	143.6	124.7	191.1	127.1	118.5
Dec Qtr	102.5	76.1	167.4	173.7	148.7	117.4	179.5	129.9	120.2
2008									
Mar Qtr	102.4	73.8	170.4	175.6	149.9	120.1	184.5	133.2	120.6
Jun Qtr	105.3	71.0	173.2	180.4	154.8	120.9	188.7	146.1	122.6
Sep Qtr	104.4	71.5	172.3	180.3	151.8	119.1	175.9	153.1	121.9
Jul	103.8	71.1	172.1	176.9	152.1	118.1	178.1	147.6	121.3
Aug	105.6	71.2	172.6	180.3	153.0	118.6	171.4	155.8	122.4
Sep	103.7	72.2	172.1	183.6	150.3	120.7	178.1	155.8	122.0
PERSONS (RATE PER 100,000 ADULT POPULATION) (g)									
2005	352.3	216.0	386.5	475.1	366.7	290.8	781.3	454.1	339.8
2006	341.9	194.7	392.2	464.7	349.0	319.5	794.1	430.1	330.4
2007	342.3	193.5	395.3	462.7	330.1	309.3	776.4	438.4	328.7
2007									
Sep Qtr	344.1	194.2	398.6	461.7	323.9	298.3	780.0	439.1	329.3
Dec Qtr	340.8	200.9	411.8	463.0	334.7	295.6	740.0	459.8	333.6
2008									
Mar Qtr	335.8	198.0	421.8	464.3	342.8	303.6	735.1	468.4	334.4
Jun Qtr	340.6	192.4	430.5	470.9	342.9	304.1	740.4	484.3	337.2
Sep Qtr	335.5	193.3	439.0	475.8	339.9	295.4	668.2	507.8	337.0
Jul	333.6	191.9	438.2	467.3	340.2	296.2	682.0	496.7	335.2
Aug	336.5	193.4	439.5	476.3	340.7	295.7	663.5	511.4	337.6
Sep	336.3	194.7	439.3	483.6	338.8	294.1	659.0	515.2	338.2

(a) Imprisonment rates from the June quarter 2007 have been calculated using preliminary ERP rebased on the 2006 Census of Population and Housing – see Explanatory Notes, paragraphs 23–24.

(b) Figures include persons with breached or suspended orders, with the exception of Vic. and Tas.

(c) Figures for the quarter and year for the first day of the month are calculated as a simple average – see Explanatory Notes, paragraph 5.

(d) As of 1 July 2005 the definition of an adult changed in Vic. to persons aged 18 years and over – see Explanatory Notes, paragraph 38.

(e) Data movements from the June quarter 2005 may be influenced by data entry delays – see Explanatory Notes, paragraph 42.

(f) Data prior to the March quarter 2007 may be slightly overstated – see Explanatory Notes, paragraph 43.

(g) Includes persons whose sex is unknown.

	NSW	Vic.(d)	Qld(e)	SA(f)	WA(g)	Tas.(h)	NT	ACT(i)	Aust.(j)
RESTRICTED MOVEMENT (NUMBER ON FIRST DAY OF MONTH)									
2005	218	21	80	362	20	..	52	2	755
2006	205	25	44	424	10	..	38	..	746
2007	197	31	..	391	5	..	34	..	659
2007									
Sep Qtr	208	35	..	396	6	..	36	..	681
Dec Qtr	143	34	..	358	7	..	33	..	575
2008									
Mar Qtr	122	34	..	375	7	..	33	..	571
Jun Qtr	135	31	..	426	5	..	38	..	635
Sep Qtr	168	29	..	421	6	..	27	..	651
Jul	165	32	..	406	5	..	32	..	640
Aug	164	33	..	410	6	..	26	..	639
Sep	175	22	..	446	6	..	24	..	673

	NSW	Vic.(d)	Qld(e)	SA(f)	WA(g)	Tas.(h)	NT	ACT(i)	Aust.(j)
REPARATION-FINE OPTION (NUMBER ON FIRST DAY OF MONTH)									
2005	128	1 735	1 488	803	279	110	1	..	4 544
2006	84	1 214	1 321	774	240	112	1	..	3 744
2007	49	1 710	843	702	192	85	—	..	3 580
2007									
Sep Qtr	42	1 819	806	704	172	79	—	..	3 622
Dec Qtr	24	2 080	624	707	203	80	—	..	3 718
2008									
Mar Qtr	15	2 032	564	662	195	67	—	..	3 534
Jun Qtr	12	1 803	589	659	197	55	—	..	3 316
Sep Qtr	12	1 602	563	648	229	41	—	..	3 095
Jul	10	1 615	607	647	232	45	—	..	3 156
Aug	11	1 584	581	652	232	39	—	..	3 099
Sep	16	1 607	500	644	224	38	—	..	3 029

	NSW	Vic.(d)	Qld(e)	SA(f)	WA(g)	Tas.(h)	NT	ACT(i)	Aust.(j)
REPARATION-COMMUNITY SERVICE (NUMBER ON FIRST DAY OF MONTH)									
2005	4 751	911	1 862	1 265	2 184	472	226	90	11 759
2006	4 436	876	2 045	1 125	1 967	501	198	85	11 233
2007	4 160	672	1 857	1 033	1 622	495	221	115	10 174
2007									
Sep Qtr	4 160	656	1 860	1 025	1 541	473	221	110	10 045
Dec Qtr	4 024	670	1 880	998	1 542	466	209	119	9 907
2008									
Mar Qtr	3 891	635	1 839	955	1 536	486	202	141	9 685
Jun Qtr	4 042	673	1 869	988	1 494	485	193	166	9 911
Sep Qtr	3 967	728	1 857	1 034	1 454	503	168	170	9 881
Jul	3 914	722	1 840	1 007	1 464	507	173	163	9 790
Aug	3 986	748	1 857	1 036	1 449	506	168	177	9 927
Sep	4 001	715	1 875	1 058	1 448	497	162	169	9 925

.. not applicable

— nil or rounded to zero (including null cells)

- (a) If a person has more than one type of order, they are counted against each order in this table. If a person has more than one order of the same order type, they are counted only once in the order type.
- (b) Figures for the quarter and year for first day of the month counts are calculated as a simple average – see Explanatory Notes, paragraph 5.
- (c) Figures include persons with breached or suspended orders, with the exception of Vic. and Tas.
- (d) As of 1 July 2005, the definition of an adult changed in Vic. to a person aged 18 years and over – see Explanatory Notes, paragraph 38.

- (e) From July 2006, restricted movement and parole orders have been affected by legislative changes – see Explanatory Notes, paragraph 40.
- (f) Data movements from the June quarter 2005 may be influenced by data entry delays – see Explanatory Notes, paragraph 42.
- (g) Data prior to the March quarter 2007 may be slightly overstated – see Explanatory Notes, paragraph 43.
- (h) Tas. conducted a trial of new orders in the 2007-08 financial year – see Explanatory Notes, paragraph 45.
- (i) From September 2005, restricted movement orders were discontinued – see Explanatory Notes, paragraph 47.
- (j) See footnotes d, e, f, g, h and i.

	NSW	Vic.(d)	Qld(e)	SA(f)	WA(g)	Tas.(h)	NT	ACT(i)	Aust.(j)
SUPERVISION (COMPLIANCE)-PAROLE (NUMBER ON FIRST DAY OF MONTH)									
2005	4 155	1 576	908	920	1 332	91	140	141	9 262
2006	3 949	1 460	975	894	1 279	86	113	136	8 890
2007	4 058	1 413	2 290	882	1 143	81	99	117	10 083
2007									
Sep Qtr	4 073	1 418	2 542	866	1 083	85	97	113	10 277
Dec Qtr	4 160	1 404	3 058	850	1 190	84	97	115	10 958
2008									
Mar Qtr	4 161	1 476	3 420	872	1 293	82	96	118	11 518
Jun Qtr	4 180	1 495	3 655	893	1 326	91	102	117	11 857
Sep Qtr	4 255	1 505	3 969	904	1 309	101	84	114	12 241
Jul	4 189	1 514	3 914	894	1 303	98	87	119	12 118
Aug	4 229	1 511	3 951	901	1 312	101	82	115	12 202
Sep	4 347	1 489	4 043	918	1 311	103	84	108	12 403

	NSW	Vic.(d)	Qld(e)	SA(f)	WA(g)	Tas.(h)	NT	ACT(i)	Aust.(j)
SUPERVISION (COMPLIANCE)-BAIL (NUMBER ON FIRST DAY OF MONTH)									
2005	218	780	231	..	4	194	1 428
2006	214	888	243	..	4	174	1 523
2007	226	1 019	245	8	7	215	1 721
2007									
Sep Qtr	225	1 044	259	3	7	218	1 756
Dec Qtr	229	979	255	28	6	238	1 736
2008									
Mar Qtr	227	893	251	40	5	238	1 654
Jun Qtr	220	859	262	28	6	230	1 605
Sep Qtr	233	838	296	4	6	268	1 645
Jul	224	831	296	12	5	255	1 623
Aug	234	824	297	np	np	268	1 630
Sep	240	858	296	np	np	282	1 682

	NSW	Vic.(d)	Qld(e)	SA(f)	WA(g)	Tas.(h)	NT	ACT(i)	Aust.(j)
SUPERVISION (COMPLIANCE)-SENTENCED PROBATION (NUMBER ON FIRST DAY OF MONTH)									
2005	10 861	4 361	8 014	2 598	3 617	539	721	817	31 528
2006	10 923	4 294	8 855	2 631	3 556	642	837	784	32 523
2007	11 198	4 093	8 680	2 803	3 485	645	853	840	32 598
2007									
Sep Qtr	11 297	4 059	8 607	2 797	3 506	638	867	851	32 623
Dec Qtr	11 269	4 099	8 788	2 951	3 593	608	826	914	33 049
2008									
Mar Qtr	11 100	4 125	8 910	3 046	3 672	634	833	942	33 262
Jun Qtr	11 274	4 089	9 032	3 115	3 657	620	847	997	33 631
Sep Qtr	11 030	4 271	9 121	3 211	3 653	626	788	1 057	33 756
Jul	11 041	4 232	9 158	3 164	3 654	613	799	1 026	33 687
Aug	11 086	4 309	9 123	3 231	3 654	628	783	1 067	33 881
Sep	10 963	4 272	9 081	3 237	3 651	637	781	1 078	33 700

.. not applicable

np not available for publication but included in totals where applicable, unless otherwise indicated

- (a) If a person has more than one type of order, they are counted against each order in this table. If a person has more than one order of the same order type, they are counted only once in the order type.
- (b) Figures for the quarter and year for first day of the month counts are calculated as a simple average – see Explanatory Notes, paragraph 5.
- (c) Figures include persons with breached or suspended orders, with the exception of Vic. and Tas.
- (d) As of 1 July 2005, the definition of an adult changed in Vic. to a person aged 18 years and over – see Explanatory Notes, paragraph 38.

- (e) From July 2006, restricted movement and parole orders have been affected by legislative changes – see Explanatory Notes, paragraph 40.
- (f) Data movements from the June quarter 2005 may be influenced by data entry delays – see Explanatory Notes, paragraph 42.
- (g) Data prior to the March quarter 2007 may be slightly overstated – see Explanatory Notes, paragraph 43.
- (h) Tas. conducted a trial of new orders in the 2007-08 financial year – see Explanatory Notes, paragraph 45.
- (i) From September 2005, restricted movement orders were discontinued – see Explanatory Notes, paragraph 47.
- (j) See footnotes d, e, f, g, h and i.

EXPLANATORY NOTES

INTRODUCTION

1 This publication presents statistical series on persons held in either adult corrective services custody or who are serving adult community-based orders in Australia. It contains data on the number of persons by their sex, Indigenous status, type of custody, legal status and sentence type; the number of sentenced persons received into corrective services custody each month; and the number of federal prisoners. Experimental data on Indigenous persons in community based corrections are also available in the Appendix.

2 Statistics presented in this publication are compiled in three ways:

- Average daily prisoner population: Counts taken on each day of the month are summed and divided by the number of days in that month to determine the average daily prisoner population for that month. The average daily periodic detainee population is a count of persons on periodic detention on each day a centre is open, divided by the number of days a centre is open.
- Sentenced prisoner reception figures: Counts are provided each month on the number of receptions where a prisoner is received as a sentenced prisoner. This includes prisoners with a change of legal status from unsentenced to sentenced.
- First day of the month prisoner population: Counts of prisoners and persons serving community-based corrections orders, taken on or near the first day of the month (see paragraphs 4 and 5).

3 Although national standards and classifications are used in the compilation of these statistics, some discrepancies remain between the states and territories. These are due to legislative and procedural differences between jurisdictions and the way that these differences are reflected in agencies' administrative data systems. As part of its quality assurance strategy, the ABS is working with corrective services agencies to minimise the effect of these differences.

REFERENCE PERIOD

4 The reference period for average daily prisoner population statistics and sentenced reception counts is the complete reference month. The reference date for all other figures is the first day of the reference month. However, not all states and territories report strictly according to this 'first day of the month' rule:

- The Western Australian, Victorian and Australian Capital Territory prisoners in New South Wales prisons populations are counted as at midnight on the last day of the month. In these cases the figures provided are taken to represent the prison population at the beginning of the following month to align with practices in other states and territories.

5 Calculation of figures for the entire quarter and entire year varies depending on the counting unit and method of counting prisoners:

- Average daily figures: Figures are calculated by weighting the average according to the number of days in each month or year.
- First day of the month: Figures are simple averages. For quarterly figures, the sum of the monthly data is divided by three; for yearly figures, the figures for each month are added and the total divided by twelve.
- Sentenced receptions: Figures are totals of each month.
- These figures may be subject to rounding.

SCOPE

6 The scope of the statistics in this publication includes all persons remanded or sentenced to adult custodial corrective services agencies (including Work Outreach Camps and Community Custody Centres in Queensland), or who are serving adult community-based orders in each state and territory in Australia.

EXPLANATORY NOTES *continued*

SCOPE *continued*

7 Counts of prisoners in the following custodial facilities are included in the collection:

- gazetted prisons in all jurisdictions;
- periodic detention centres in New South Wales and the Australian Capital Territory;
- community custody centres and work outreach camps in Queensland;
- cells in court complexes administered by corrective services in New South Wales;
- transitional centres in New South Wales; and
- lock-ups in Western Australia operated by the police but designated as a prison by the Chief Executive Officer of Corrective Services.

8 The prisons and community corrections collection excludes the following custodial facilities:

- police lockups, police prisons and cells in court complexes not administered and controlled by corrective services;
- gazetted police prisons in the Northern Territory;
- juvenile detention centres, including those under the authority of adult corrective services;
- immigration detention centres; and
- military prisons.

9 This collection includes counts of persons remanded or sentenced to adult custody facilities, or directed to serve community based orders administered by adult corrective services agencies. In all states and territories except Queensland, persons are considered adults if aged 18 years and over. In Queensland persons are considered adults if aged 17 years and over. The vast majority of persons counted in the collection are adults. However, juveniles may be included in exceptional circumstances.

10 Since December 2004, the Kariong Juvenile Correctional Centre in New South Wales has operated under the authority of adult corrective services. The population at Kariong Juvenile Correctional Centre may include adult persons as well as juveniles. New South Wales includes juveniles based in Kariong in this collection, however, this facility accounts for less than 0.5% of the New South Wales prisoner population.

11 Federal prisoners include those persons charged and sentenced under a Commonwealth statute, and those persons who are charged and sentenced under the laws of another country but transferred to an Australian prison to serve their sentence under the *International Transfer of Prisoners Act 1997* (Cwlth). To give practical effect to this legislation in Australia, the framework was introduced in January 2003. For the purposes of this publication, federal sentenced prisoners are those persons who are recognised by the Criminal Law Division of the Australian Government Attorney-General's Department as having been charged and sentenced under a Commonwealth statute, or transferred from another country to serve their sentence in Australia.

12 With the exception of Victoria and Tasmania, community-based corrections includes those persons with breached or suspended orders.

DATA SOURCE

13 Statistics in this publication are derived from information provided to the ABS from administrative records held by corrective services agencies within each state and territory. Statistics on federal prisoners are derived from records kept by the Criminal Law Division of the Australian Government Attorney-General's Department.

COUNTING RULES

14 Statistics for persons held in custody are presented by the state or territory in which they were held and therefore may not be the sentencing jurisdiction. The only exception to this are data for federal sentenced prisoners. These are presented by the state or territory in which they were sentenced, not where they were held in custody.

EXPLANATORY NOTES *continued*

COUNTING RULES *continued*

15 Sentenced prisoners who have other offences that are unsentenced are counted as sentenced. Prisoners may be unsentenced because they are awaiting the outcome of their trial, convicted but awaiting sentence, or awaiting deportation.

16 If an offender has two or more different types of community-based orders operating simultaneously, then each order will be counted. If two or more community-based orders are of the same type, these orders together will only be counted as one order.

AUSTRALIAN CAPITAL TERRITORY PRISONERS

17 Persons sentenced to full-time custody by the Australian Capital Territory are usually held in New South Wales prisons. The Australian Capital Territory has two remand centres for unsentenced prisoners and a periodic detention centre. During 2000 the Australian Capital Territory commenced detaining prisoners sentenced for fine default only at their remand centres. Unsented Australian Capital Territory prisoners may also be detained in New South Wales prisons. A new custodial facility, the Alexander Maconochie Centre, opened in the Australian Capital Territory in September 2008. It is expected to begin accommodating prisoners from January 2009.

18 To provide greater understanding of the number of prisoners attributed to the Australian Capital Territory, while presenting an accurate picture of the New South Wales prisoner population, statistics relating to Australian Capital Territory prisoners in New South Wales prisons are presented as a subset of the New South Wales figures.

19 Imprisonment rate data for the Australian Capital Territory are included in the publication and are calculated on the basis of the total number of Australian Capital Territory prisoners (i.e. Australian Capital Territory prisoners held in New South Wales prisons, and Australian Capital Territory prisoners held in the Australian Capital Territory) divided by the estimated resident Australian Capital Territory adult population and multiplied by 100,000. For New South Wales, the imprisonment rate is based on the count of New South Wales prisoners, excluding Australian Capital Territory prisoners held in New South Wales prisons, divided by the estimated resident New South Wales adult population and multiplied by 100,000. Time series data have also been derived on this basis.

RATES

20 Imprisonment and community-based corrections rates enable comparisons of prisoner numbers to be made across states and territories. Prisoner and community-based corrections rates are expressed per 100,000 adult population. Imprisonment rates are calculated based on two different counting concepts (average daily and first day of the month), as a result there may be variations in imprisonment rates presented in this publication.

21 In this publication the population figures used in the calculation of rates are for persons aged 18 years and over for all states and territories except Queensland where the population is persons aged 17 years and over (see paragraph 9).

22 Rates for the total adult prisoner population and persons in community-based corrections are calculated using the estimated resident population (ERP) for each of the states and territories. All estimates for the Australian Capital Territory exclude Jervis Bay Territory. All estimates for Australia exclude the external territories of Christmas Island and the Cocos (Keeling) Island. As the population changes over time the denominator used for the calculation of rates varies, depending on the reference period. The most current ERP data available at the time of publication are used to calculate rates as follows:

- for the March quarter, ERP is from the previous September quarter;
- for the June quarter, ERP is from the previous December quarter;
- for the September quarter, ERP is from the previous March quarter;
- for the December quarter, ERP is from the previous June quarter; and
- annual rates are an average of the rates of the contributing quarters.

EXPLANATORY NOTES *continued*

RATES *continued*

23 The ERP series are revised every five years to incorporate additional information available from the latest Census of Population and Housing. The rates per 100,000 adult persons presented in this issue have been calculated using different ERP counts as follows:

- 2006-2008 rates are calculated using preliminary ERP data based on the 2006 Census of Population and Housing; and
- 2005 rates are calculated using ERP data based on the 2006 Census of Population and Housing.

24 For population estimates and information on the methodology used to produce the ERP, see *Australian Demographic Statistics* (cat.no.3101.0).

Indigenous imprisonment rates

25 Rates for the Indigenous adult population in this publication are based on the low series projections for 30 June of the relevant calendar year (refer to *Experimental Estimates and Projections, Aboriginal and Torres Strait Islander Australians, 30 June 1991 to 30 June 2009* (cat.no.3238.0)). These projections are based on the 2001 Census of Population and Housing. New series of Indigenous population projections are scheduled for release in 2009 and will be based on the 2006 Census of Population and Housing.

26 The low series is one of two series of projections that have been published for the years 2002 to 2009.

- The low series assumes no 'unexplained growth' – that is, the Indigenous population recorded in the 2001 Census of Population and Housing is projected to change only as a result of births and deaths (natural increase) and, for the states and territories, as a result of interstate migration.
- The high series assumes that there will be 'unexplained growth' in the Indigenous population – that is, the Indigenous population is projected to change as a result of an unexplained component in addition to the effects of natural increase and interstate migration. The size of the unexplained component is based on the 'unexplained growth' observed between the 1996 and 2001 Censuses.

27 The decision to use the low series as the denominator in the calculation of Indigenous imprisonment rates from 2002 followed consultation with the National Corrective Services Statistics Unit Advisory Group and other stakeholders.

INDIGENOUS IDENTIFICATION

28 The ABS is currently evaluating the use of the ABS Indigenous identification standard in Corrective Services agencies (both custodial and community-based corrections). Whilst the ABS has published Indigenous status data in Corrective Services collections for a number of years, quality assurance is required to better understand the level of accuracy over time.

29 The quality of the Indigenous status information collected and recorded in Corrective Services agencies is assessed against the ABS Standard Indigenous Question (SIQ). The SIQ is based upon self-identification by the individual who comes into contact with Corrective Services agencies. The SIQ requires individuals to be asked "Are you of Aboriginal or Torres Strait Islander origin?" The answers to the SIQ can be 'No', 'Yes, Aboriginal', or 'Yes, Torres Strait Islander'. If the offender is of Aboriginal and Torres Strait Islander origin, both responses should be identified. If an offender does not supply an answer to this question, or is not asked, the Indigenous status field should be recorded as 'not stated'.

EXPLANATORY NOTES *continued*

INDIGENOUS IDENTIFICATION

continued

30 As a result, the minimum output categories required in systems are:

- Aboriginal, but not Torres Strait Islander origin
- Torres Strait, but not Aboriginal origin
- Both Aboriginal and Torres Strait Islander origin
- Neither Aboriginal nor Torres Strait Islander origin
- Not stated/inadequately described

31 For custodial corrections, initial indications are that corrective services agencies in all states and territories, with the exception of South Australia and Western Australia, ask the SIQ as described above.

32 There are however differences across the states and territories in relation to the recording processes for custodial data. In Tasmania, the Northern Territory and the Australian Capital Territory, individuals are asked the SIQ on each reception into corrective services custody, and it is mandatory to enter a response to this field in their recording systems. Victoria and Queensland do not re-ask the SIQ for every subsequent involvement that an individual has with corrective services, and data may also be sourced from other justice sources. In South Australia, it is a requirement for persons to be asked upon reception on each occasion in which they enter custody; however, it is not a mandatory field in their recording system. New South Wales does not have Indigenous status as a mandatory field in their recording systems and does not always re-ask the question for subsequent involvements. Western Australia does not currently comply with any component of the SIQ. For more information about Indigenous identification in community-based corrections refer to Appendix, page 36.

33 Some persons in custody are recorded with an unknown Indigenous status on the information systems of corrective agencies as their status has not been able to be obtained. Persons with Indigenous status unknown are excluded from tables 6, 7, 12 and 13. Counts of persons with an unknown Indigenous status are included in all other tables. Unknowns account for just over 1% of all records.

SIGNIFICANT EVENTS

New South Wales

34 In March 2008, the administrative classification of the Wellington Correctional Centre was altered. The classification was changed from 'open' to 'secure' for 75% of the facility to reflect the change in the profile of inmates held. As such, the proportion of persons in secure and open custody altered in the March quarter 2008 compared to previous quarters.

35 The administrative classification of the following NSW correctional facilities was altered at 1 July 2005: Cooma, Dilwynia, Parramatta and Berrima. These facilities changed classification from 'open' to 'secure' to reflect alterations in the profile of inmates held, and the operational requirements of those centres. As such, the proportion of persons in secure and open custody altered in the September quarter 2005 compared to previous quarters.

Victoria

36 The State government introduced an amnesty from February 2006 to May 2006 to encourage payment of unpaid fines. This resulted in a decrease in the number of persons serving a community-based order for fine default, particularly for the September quarter 2006.

37 In March 2006, Victoria opened Marngoneet Correctional Centre, Lara. The focus of this facility is to provide intensive treatment and offender management programs for males who have a minimum of six months of their sentence left to serve when they arrive there. The new Metropolitan Remand Centre at Ravenhall was opened in April 2006. The facility provides increased capacity to hold prisoners awaiting trial or sentencing.

EXPLANATORY NOTES *continued*

Victoria continued

38 On 1 July 2005 the *Children and Young Persons (Age Jurisdiction) Act 2004* came into force in Victoria. This Act changed the definition of a child from a person under 17 years of age to a person under 18 years of age. As a consequence the definition of an adult also changed for corrective services data to a person aged 18 years and over. Imprisonment rates for the September and December quarters 2005, and March quarter 2006 have been revised as a consequence. Data prior to 1 July 2005 includes persons aged 17 years.

Queensland

39 Quality assurance work conducted in Queensland during the September quarter 2007 resulted in the identification and elimination of duplicate and other records for the month of July 2007. Caution should be exercised when comparing data prior to the September quarter 2007.

40 *The Corrective Services Act 2006* (Qld) commenced on 26 August 2006. One key provision in the new legislation relates to the management of offenders subject to Court-ordered Parole. This new order ensures that offenders serve 100% of their sentence under supervision, either in a correctional centre or under community supervision. This new order provides courts with the power to specify a parole release date for persons sentenced to a term of imprisonment of 3 years or less. Technical breaches of parole orders are no longer heard by a parole board and can often result in a person serving the remainder of their original sentence in custody. Court-ordered Parole is not available to sex offenders or serious violent offenders.

41 In September 2005 Queensland implemented a new offender management system - the Integrated Offender Management System (IOMS). As a result data for the September quarter 2005, December quarter 2005, and March quarter 2006 were revised in June quarter 2006.

South Australia

42 Data on community-based correction orders extracted from the South Australian information system from the June quarter 2005 may be subject to data processing time lags.

Western Australia

43 Caution should be exercised when comparing community-based correction orders in Western Australia prior to the March quarter 2007 as data may have been slightly overstated.

44 In the June quarter 2005, Western Australia implemented a strategy to reduce the number of fine defaulters being taken into custody by offering alternative means of payment. This has resulted in a decrease in the number of sentenced receptions into custody for the September quarter 2005.

Tasmania

45 Tasmania was involved in a trial of new orders for bail, suspended sentences and drug treatment as part of the Court Mandated Diversion program (CMD) from 1 July 2007 to 30 June 2008. Counts for bail orders during the September quarter 2008 represent the transitional period concluding this trial.

46 The new Risdon Prison Complex in Tasmania was opened on 28 August 2006. This complex includes the Mary Hutchison Women's Prison which was opened in May 2006. A new men's maximum/medium security facility was also built within the complex.

Australian Capital Territory

47 In September 2005, home detention orders were discontinued as a sentencing and remand option in the Australian Capital Territory.

48 From 1 July 2005, Australian Capital Territory periodic detainees who were in breach of an order for more than three months were excluded from counts. Consequently, the periodic detainee population decreased.

EXPLANATORY NOTES *continued*

RELATED PUBLICATIONS

ABS Publications

- 49** Other ABS publications that may be of interest include:
- Australian Demographic Statistics* (cat.no.3101.0) – issued quarterly
 - Australian Social Trends* (cat.no.4102.0) – issued annually
 - Australian Standard Offence Classification* (cat.no.1234.0) – irregular
 - Crime and Safety, Australia* (cat.no.4509.0) – released 26 April 2006
 - Criminal Courts, Australia* (cat.no.4513.0) – issued annually
 - Experimental Estimates and Projections, Aboriginal and Torres Strait Islander Australians, 30 June 1991 to 30 June 2009* (cat. no. 3238.0)
 - General Social Survey: Summary Results, Australia* (cat.no.4159.0) – irregular
 - Information Paper: Measuring Crime Victimisation, Australia: The Impact of Different Collection Methodologies* (cat.no.4522.0.55.001) – single issue
 - Information Paper: National Criminal Justice Statistical Framework* (cat.no. 4525.0) – single issue
 - Information Paper: National Information Development Plan for Crime and Justice Statistics 2005* (cat.no.4520.0) – single issue
 - Measures of Australia's Progress* (cat.no.1370.0) – released 31 May 2006
 - Personal Fraud Survey* (cat.no.4528.0) – released 27 June 2008
 - Personal Safety Survey* (cat.no.4906.0) – released 21 August 2006
 - Prisoners in Australia* (cat.no.4517.0) – issued annually
 - Recorded Crime – Victims, Australia* (cat.no.4510.0) – issued annually
 - Sexual Assault in Australia: A Statistical Overview* (cat.no.4523.0) – single issue

50 Current publications and other products released by the ABS are available from the ABS website <<http://www.abs.gov.au>>. The ABS also issues a daily Release Advice on the website that details products to be released in the week ahead. The National Centre for Crime and Justice Statistics releases *Crime and Justice News* (cat. no. 4500.0), an annual newsletter that is published on the ABS website. The Centre can be contacted by email through <crime.justice@abs.gov.au>.

Non-ABS Publications

- 51** Non-ABS sources that may be of interest include:
- Australian Institute of Criminology, *List of Publications* – irregular
<<http://www.aic.gov.au>>
 - Crime Research Centre, University of Western Australia, *Crime and Justice Statistics for Western Australia* – issued annually
<<http://www.crc.law.uwa.edu.au>>
 - Department of Corrective Services, New South Wales, *NSW Inmate Census* – irregular
<<http://www.dcs.nsw.gov.au>>
 - Department of Justice, Northern Territory, *Northern Territory Quarterly Crime and Justice Statistics* – issued quarterly
<<http://www.nt.gov.au/justice/>>
 - Department of Justice, Victoria, *Statistical Profile of the Victorian Prison System* – issued annually
<<http://www.justice.vic.gov.au>>
 - NSW Bureau of Crime Statistics and Research, *New South Wales Criminal Courts Statistics* – issued annually
<<http://www.lawlink.nsw.gov.au>>
 - Office of Crime Statistics and Research, *South Australia, Crime and Justice in South Australia* – issued annually
<<http://www.ocsar.sa.gov.au>>
 - Steering Committee for the Review of Commonwealth/State Service Provision, *Report on Government Services* – issued annually
<<http://www.pc.gov.au>>

APPENDIX EXPERIMENTAL COMMUNITY-BASED CORRECTIONS DATA

INTRODUCTION

This appendix presents experimental data for Indigenous persons in community-based corrections. Data are presented as the number of Indigenous persons on community-based corrections orders on the first day of the month.

An initial evaluation of the quality of Indigenous identification by the ABS in community-based corrections has highlighted that currently no jurisdiction is fully complying with the ABS Standard Indigenous Question (SIQ - see Explanatory Notes, paragraph 29); therefore, care should be taken when referring to this data. The extent to which jurisdictions are complying with the standard varies. Currently, Tasmania is complying with most SIQ requirements, but does not necessarily re-ask the question on each occasion that an individual commences an order under corrective services supervision. The remaining jurisdictions have more significant issues to overcome before they comply with the SIQ, and the ABS will continue to work with states and territories to better understand and improve the quality of this data item. It should be noted that at the time of publication, the SIQ recording processes applied in the Australian Capital Territory are yet to be confirmed.

APPENDIX EXPERIMENTAL COMMUNITY-BASED CORRECTIONS DATA

continued

A1 PERSONS IN COMMUNITY-BASED CORRECTIONS(a)(b), By Indigenous status

	NSW	Vic. (c)	Qld	SA(d)	WA(e)	Tas.	NT	ACT	Aust. (f)
INDIGENOUS (NUMBER ON FIRST DAY OF MONTH)									
2005	2 842	378	2 054	714	1 638	111	777	100	8 613
2006	2 908	324	2 146	746	1 777	141	846	81	8 969
2007	3 198	341	2 267	816	1 643	137	880	100	9 380
2007									
Sep Qtr	3 282	353	2 323	837	1 584	135	888	102	9 504
Dec Qtr	3 229	370	2 436	834	1 660	134	853	105	9 621
2008									
Mar Qtr	3 134	355	2 461	850	1 762	132	858	106	9 658
Jun Qtr	3 192	352	2 547	896	1 838	129	873	116	9 944
Sep Qtr	3 174	346	2 598	963	1 811	128	823	131	9 974
Jul	3 165	348	2 575	938	1 830	126	835	126	9 943
Aug	3 180	347	2 583	963	1 816	129	819	128	9 965
Sep	3 178	342	2 637	989	1 786	130	815	138	10 015
NON-INDIGENOUS (NUMBER ON FIRST DAY OF MONTH)									
2005	14 062	7 143	9 227	4 588	3 907	756	330	806	40 817
2006	13 835	6 675	9 978	4 793	3 613	946	307	876	41 024
2007	13 843	6 707	10 317	4 809	3 580	970	291	959	41 476
2007									
Sep Qtr	14 010	6 727	10 429	4 801	3 559	958	298	958	41 740
Dec Qtr	13 836	6 965	10 817	4 843	3 678	940	281	1 011	42 370
2008									
Mar Qtr	13 792	7 048	11 183	4 862	3 739	953	276	1 016	42 869
Jun Qtr	14 014	6 928	11 461	4 900	3 700	959	279	1 044	43 286
Sep Qtr	13 772	6 983	11 787	4 913	3 730	974	221	1 094	43 474
Jul	13 764	6 952	11 783	4 846	3 718	979	231	1 074	43 347
Aug	13 837	6 994	11 819	4 916	3 738	974	218	1 100	43 596
Sep	13 714	7 003	11 759	4 978	3 733	968	215	1 109	43 479
UNKNOWN (NUMBER ON FIRST DAY OF MONTH)									
2005	1 296	864	386	370	8	200	4	223	3 351
2006	1 101	602	—	58	4	97	2	125	1 988
2007	962	662	—	46	6	52	2	79	1 809
2007									
Sep Qtr	815	689	—	45	7	27	1	88	1 672
Dec Qtr	915	734	—	35	16	37	1	93	1 832
2008									
Mar Qtr	851	586	—	30	17	60	2	112	1 658
Jun Qtr	883	507	—	44	19	61	—	118	1 633
Sep Qtr	952	545	—	49	17	19	—	122	1 704
Jul	871	515	—	37	14	19	—	118	1 574
Aug	935	534	—	54	16	19	—	129	1 687
Sep	1 050	586	—	57	20	18	—	120	1 851

— nil or rounded to zero (including null cells)

- (a) Figures include persons with breached or suspended orders, with the exception of Vic. and Tas.
- (b) Figures for the quarter and year for first day of the month counts are calculated as a simple average – see Explanatory Notes, paragraph 5.
- (c) As of 1 July 2005, the definition of an adult changed in Vic. to a person aged 18 years and over – see Explanatory Notes, paragraph 38.

- (d) Data movements from June quarter 2005 may be influenced by data entry delays – see Explanatory Notes, paragraph 42.
- (e) Data prior to the March quarter 2007 may be slightly overstated – see Explanatory Notes, paragraph 43.
- (f) See footnotes c, d and e.

APPENDIX EXPERIMENTAL COMMUNITY-BASED CORRECTIONS DATA

continued

A1 PERSONS IN COMMUNITY-BASED CORRECTIONS(a)(b), By Indigenous status *continued*

	NSW	Vic. (c)	Qld	SA(d)	WA(e)	Tas.	NT	ACT	Aust. (f)
PERSONS (NUMBER ON FIRST DAY OF MONTH)									
2005	18 200	8 384	11 667	5 672	5 553	1 067	1 110	1 128	52 782
2006	17 843	7 601	12 124	5 597	5 395	1 184	1 155	1 082	51 981
2007	18 002	7 710	12 584	5 671	5 229	1 159	1 173	1 138	52 665
2007									
Sep Qtr	18 107	7 769	12 752	5 683	5 150	1 120	1 187	1 148	52 916
Dec Qtr	17 980	8 069	13 253	5 712	5 354	1 111	1 134	1 209	53 823
2008									
Mar Qtr	17 777	7 989	13 645	5 742	5 518	1 144	1 136	1 234	54 185
Jun Qtr	18 089	7 787	14 009	5 840	5 558	1 150	1 152	1 277	54 862
Sep Qtr	17 898	7 874	14 385	5 926	5 557	1 121	1 044	1 347	55 152
Jul	17 800	7 815	14 358	5 821	5 562	1 124	1 066	1 318	54 864
Aug	17 952	7 875	14 402	5 933	5 570	1 122	1 037	1 357	55 248
Sep	17 942	7 931	14 396	6 024	5 539	1 116	1 030	1 367	55 345

- (a) Figures include persons with breached or suspended orders, with the exception of Vic. and Tas.
- (b) Figures for the quarter and year for first day of the month counts are calculated as a simple average – see Explanatory Notes, paragraph 5.
- (c) As of 1 July 2005, the definition of an adult changed in Vic. to a person aged 18 years and over – see Explanatory Notes, paragraph 38.
- (d) Data movements from June quarter 2005 may be influenced by data entry delays – see Explanatory Notes, paragraph 42.
- (e) Data prior to the March quarter 2007 may be slightly overstated – see Explanatory Notes, paragraph 43.
- (f) See footnotes c, d and e.

APPENDIX EXPERIMENTAL COMMUNITY-BASED CORRECTIONS DATA

continued

A2 PROPORTION OF PERSONS IN COMMUNITY-BASED CORRECTIONS(a)(b), By Indigenous status

	NSW	Vic. (c)	Qld	SA(d)	WA(e)	Tas.	NT	ACT	Aust. (f)
INDIGENOUS (%)									
2005	15.6	4.5	17.6	12.6	29.5	10.4	69.9	8.8	16.3
2006	16.3	4.3	17.7	13.3	32.9	11.9	73.3	7.4	17.3
2007	17.8	4.4	18.0	14.4	31.4	11.8	75.0	8.8	17.8
2007									
Sep Qtr	18.1	4.5	18.2	14.7	30.8	12.1	74.8	8.9	18.0
Dec Qtr	18.0	4.6	18.4	14.6	31.0	12.1	75.2	8.7	17.9
2008									
Mar Qtr	17.6	4.4	18.0	14.8	31.9	11.5	75.5	8.6	17.8
Jun Qtr	17.6	4.5	18.2	15.3	33.1	11.2	75.8	9.1	18.1
Sep Qtr	17.7	4.4	18.1	16.3	32.6	11.5	78.8	9.7	18.1
Jul	17.8	4.5	17.9	16.1	32.9	11.2	78.3	9.6	18.1
Aug	17.7	4.4	17.9	16.2	32.6	11.5	79.0	9.4	18.0
Sep	17.7	4.3	18.3	16.4	32.2	11.6	79.1	10.1	18.1
NON-INDIGENOUS (%)									
2005	77.3	85.2	79.1	80.9	70.4	70.8	29.7	71.4	77.3
2006	77.5	87.8	82.3	85.6	67.0	79.9	26.6	81.0	78.9
2007	76.9	87.0	82.0	84.8	68.5	83.7	24.8	84.3	78.8
2007									
Sep Qtr	77.4	86.6	81.8	84.5	69.1	85.6	25.1	83.4	78.9
Dec Qtr	77.0	86.3	81.6	84.8	68.7	84.6	24.7	83.6	78.7
2008									
Mar Qtr	77.6	88.2	82.0	84.7	67.8	83.3	24.3	82.3	79.1
Jun Qtr	77.5	89.0	81.8	83.9	66.6	83.4	24.2	81.7	78.9
Sep Qtr	76.9	88.7	81.9	82.9	67.1	86.9	21.2	81.2	78.8
Jul	77.3	89.0	82.1	83.3	66.8	87.1	21.7	81.5	79.0
Aug	77.1	88.8	82.1	82.9	67.1	86.8	21.0	81.1	78.9
Sep	76.4	88.3	81.7	82.6	67.4	86.7	20.9	81.1	78.6
UNKNOWN (%)									
2005	7.1	10.3	3.3	6.5	0.1	18.7	0.4	19.7	6.3
2006	6.2	7.9	—	1.0	0.1	8.2	0.2	11.6	3.8
2007	5.3	8.6	—	0.8	0.1	4.5	0.1	6.9	3.4
2007									
Sep Qtr	4.5	8.9	—	0.8	0.1	2.4	0.1	7.7	3.2
Dec Qtr	5.1	9.1	—	0.6	0.3	3.3	0.1	7.7	3.4
2008									
Mar Qtr	4.8	7.3	—	0.5	0.3	5.2	0.2	9.1	3.1
Jun Qtr	4.9	6.5	—	0.8	0.3	5.3	—	9.2	3.0
Sep Qtr	5.3	6.9	—	0.8	0.3	1.7	—	9.1	3.1
Jul	4.9	6.6	—	0.6	0.3	1.7	—	9.0	2.9
Aug	5.2	6.8	—	0.9	0.3	1.7	—	9.5	3.1
Sep	5.9	7.4	—	0.9	0.4	1.6	—	8.8	3.3

— nil or rounded to zero (including null cells)

(a) Figures include persons with breached or suspended orders, with the exception of Vic. and Tas.

(b) Figures for the quarter and year for first day of the month counts are calculated as a simple average – see Explanatory Notes, paragraph 5.

(c) As of 1 July 2005, the definition of an adult changed in Vic. to a person aged 18 years and over – see Explanatory Notes, paragraph 38.

(d) Data movements from June quarter 2005 may be influenced by data entry delays – see Explanatory Notes, paragraph 42.

(e) Data prior to the March quarter 2007 may be slightly overstated – see Explanatory Notes, paragraph 43.

(f) See footnotes c, d and e.

GLOSSARY

Bail	This is generally a pre-sentence option where a person is released into the community for a period before they appear in court for trial or final sentencing. Bail orders can require a financial surety to be lodged with the court, and a number of conditions including supervision and residential requirements designed to ensure the re-appearance of the person at court. Bail counts are available only in states and territories where bail orders are supervised by corrective services. Bail is a sub-category of Supervision where the person is under the supervision of corrective services (<i>see</i> Supervision).
Community-based corrections	This refers to the community-based management of court-ordered sanctions, post-prison administrative arrangements and fine conversions, which principally involve the provision of one or more of the following activities: supervision, programs or community work.
Community service	This category of community-based corrections orders includes sentencing options requiring offenders to undertake a specified number of hours of unpaid, supervised work to benefit the community on an approved project. Community service is a sub-category of Reparation (<i>see</i> Reparation).
Corrective services custody	Confinement in a place intended primarily for the purpose of confining prisoners, such as a prison, prison farm, Periodic Detention Centre or Community Custody Centre.
Federal sentenced prisoner	Persons charged and sentenced under a Commonwealth statute or transferred from another country to serve their sentence in Australia.
Fine option	A community-based sentence type where the offender is serving a sentence for default of a fine. In most jurisdictions this order type requires an offender to complete community service as a reparatory act. Fine option is a sub-category of Reparation (<i>see</i> Reparation).
Full-time prison custody	A type of custody where a prisoner is required to be held in custody on a full-time basis. This includes prisons, Queensland Community Custody Centres and work outreach camps. Full-time prison custody excludes periodic detention (<i>see</i> Periodic detention).
Home detention	(<i>see</i> Restricted movement)
Indigenous prisoner	A prisoner who identifies as being of Aboriginal or Torres Strait Islander origin, or both.
Legal status	A person may be either sentenced or unsentenced depending on the warrant(s) or court order(s) that provide the legal basis for the administration of the person through the criminal justice system.
Open custody	Refers to prisoners housed in minimum security custodial facilities that do not require them to be confined by a secure perimeter physical barrier, irrespective of whether a physical barrier exists.
Parole	A parole order is made following a period of imprisonment and requires an offender to be subject to supervision in the community. Additional conditions may also be applied such as programs, counselling or drug testing. Parole is a sub-category of Supervision (<i>see</i> Supervision).
Periodic detention	A type of custody or order where a sentenced prisoner is required to be held in custody on a part-time basis. Currently this consists of two consecutive days in a one-week period, while remaining at liberty during the rest of the week.
Prisoner	A person held in custody. For the purposes of this collection, prisoners are those whose confinement is the responsibility of a corrective services agency.
Remand	(<i>see</i> Unsentenced)
Reparation	Reparation refers to all offenders with an order that requires them to undertake unpaid, justice agency-approved community service work.

GLOSSARY *continued*

Restricted movement	This refers to persons who are subject to a system of restricted movement, including supervision and/or electronic monitoring. This category includes home detention that may restrict residence to a nominated place. Restricted movement can be either a pre-sentence or post-sentence order.
Secure custody	Refers to prisoners housed in medium or maximum security custodial facilities requiring them to be confined by a secure physical barrier.
Sentenced	A legal status indicating that a person has received a custodial or community-based order from a court in response to a conviction for an offence.
Sentenced prisoner reception	Refers to entry into corrective services custody from the community, having received a sentence of imprisonment as an outcome of a court proceeding; or persons who are sentenced to custody while in custody on remand (i.e. changed status from a remand to a sentenced prisoner); or persons entering custody as a result of defaulting on the payment of a fine. Sentenced prisoners in custody who receive a further sentence of imprisonment are not counted as sentenced receptions.
Sentenced probation	A supervision order made following an original sentence handed down in court following conviction. A probation order generally requires 'good behaviour' and compliance with the directions of supervisors. The order may also require compliance with conditions such as program attendance and residential requirements.
Supervision (compliance)	This includes community-based orders other than those categorised as restricted movement or reparation (e.g. parole, bail and sentenced probation).
Unsentenced	A legal status indicating that a person is confined to custody or supervision while awaiting the outcome of their trial.

FOR MORE INFORMATION . . .

INTERNET **www.abs.gov.au** the ABS website is the best place for data from our publications and information about the ABS.

INFORMATION AND REFERRAL SERVICE

Our consultants can help you access the full range of information published by the ABS that is available free of charge from our website. Information tailored to your needs can also be requested as a 'user pays' service. Specialists are on hand to help you with analytical or methodological advice.

PHONE 1300 135 070

EMAIL client.services@abs.gov.au

FAX 1300 135 211

POST Client Services, ABS, GPO Box 796, Sydney NSW 2001

FREE ACCESS TO STATISTICS

All statistics on the ABS website can be downloaded free of charge.

WEB ADDRESS www.abs.gov.au